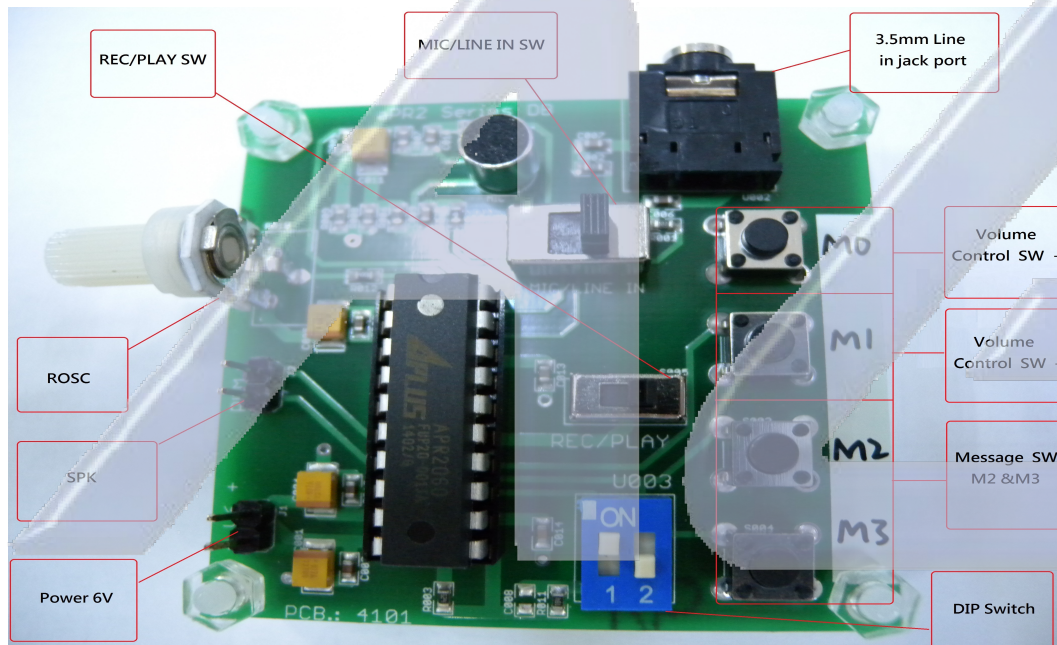


APR2060DB-K2.1 Demo Board

User Guide

APR2060 DB-K2.1 is suitable for APR2060-K2.1 supporting fixed 1/2 messages & volume control mode.



● How to set up :

1. Connect the speaker & the power (6V, 4batteries)
2. Move the DIP SW to your required 1 or 2 sections rec & playback.
(Default : 2 sections mode & 12KHz sample rate)



2 sections

20sec/each section(M2-M3)



1 section

40sec/ M2

**** Please note to remove the power & wait for 3-5 seconds then connect the power again before you want to change the DIP SW to the other section mode.**

- How to do the recording :

1. For MIC recording :

Slide MIC/LINE IN SW to MIC and Slide REC/PLAY to REC → Press & release TACT SW(M2-M3), hear BEEP sound with LED on to start REC through Microphone. Press & release TACT SW again or memory full with LED off to finish your recording.

2. For Line In recording :

Slide MIC/LINE IN SW to LINE IN and Slide REC/PLAY to REC, connecting 3.5mm audio cable to PC, cell phone or MP3 player. then start the recording as the above.

- How to do the playback :

Slide REC/PLAY SW to PLAY → Press & Release TACT SW (M2-M3) to play voices with LED on. After finishing playback, LED will be off.

- How to do the volume control (Default at level 4) :

M0 : Press the SW every time would increase the volume one level from level 5 to level 8.

M1 : Press the SW every time would decrease the volume one level from level 3 to level 0.

- The sample rate can be adjusted by using the VR on the demo board.

Forward rotation would lower the sample rate and backward rotation would raise the sample rate. We attach their corresponding table of sample rate & seconds & resistance for reference.

Sample Rate	Seconds	Resistance
12KHz	42 sec	47K
11KHz	46 sec	63K
10KHz	51 sec	79K
9KHz	56 sec	100K
8KHz	64 sec	120K
7KHz	73 sec	143K
6KHz	85 sec	173K

■ HISTORY

Ver. A (2014/03/20)

- Original version User Guide for aPR2060 K2.1



Electrónica S.A. de C.V.