

POW-R-BLOK™

Dual SCR/Diode Isolated Module
90 Amperes / Up to 1600 Volts

Description:

Powerex SCR/Diode Modules are designed for use in applications requiring phase control and isolated packaging. The modules are isolated for easy mounting with other components on a common heatsink. *POW-R-BLOK™* has been tested and recognized by the Underwriters Laboratories.

Features:
Features:

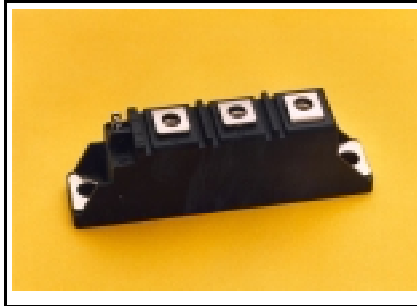
- Electrically Isolated Heatsinking
- DBC Alumina (Al₂O₃) Insulator
- Glass Passivated Chips
- DBC Alumina (Al₂O₃) Baseplate
- Low Thermal Impedance for Improved Current Capability
- UL Recognized (E78240)

Benefits:

- No Additional Insulation Components Required
- Easy Installation
- No Clamping Components Required
- Reduce Engineering Time

Applications:

- Bridge Circuits
- AC & DC Motor Drives
- Battery Supplies
- Power Supplies
- Large IGBT Circuit Front Ends
- Lighting Control
- Heat & Temperature Control
- Welders

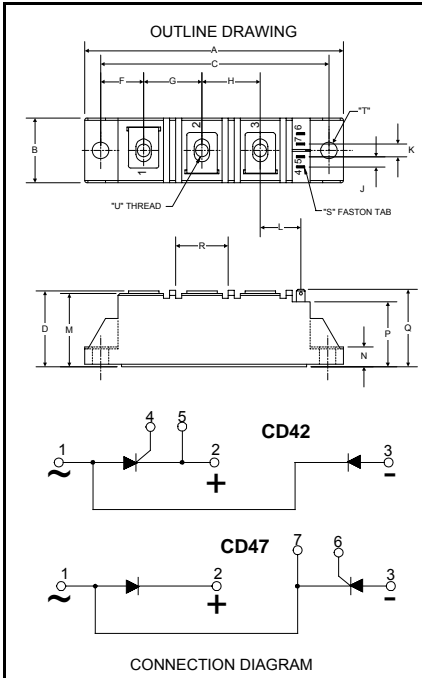


CD42__90, CD47__90
Dual SCR/Diode Isolated
POW-R-BLOK™ Module
90 Amperes / Up to 1600 Volts

Ordering Information:

Select the complete eight digit module part number from the table below.
 Example: CD421690 is a 1600Volt, 90 Ampere Dual SCR/Diode Isolated *POW-R-BLOK™* Module

Type	Voltage Volts (x100)	Current Amperes (x 1)
CD42	08	90
CD47	12	
	16	


CD42, CD47 Outline Dimensions

Dimension	Inches	Millimeters
A	3.62	92
B	0.81	20.5
C	3.15	80
D	1.18	30
F	0.59	15
G	0.79	20
H	0.79	20
J	0.16	4
K	0.23	5.8
L	0.61	15.5
M	1.14	29
N	0.24	6.1
P	0.94	24
Q	1.18	30
R	0.71	18
S	0.11 x .03	2.8 x 0.8
T	0.25	6.3
U	M5	M5

Note: Dimensions are for reference only