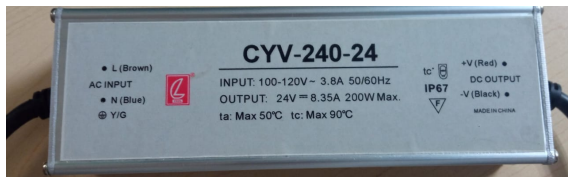




CYV-240-24(AC110V)Waterproof Series

◆ Features:

- Enclosed sealed cover,IP67 level
- Free air cooling
- 100% full load aging test
- Design refer to CCC certificate
- 2 years warranty



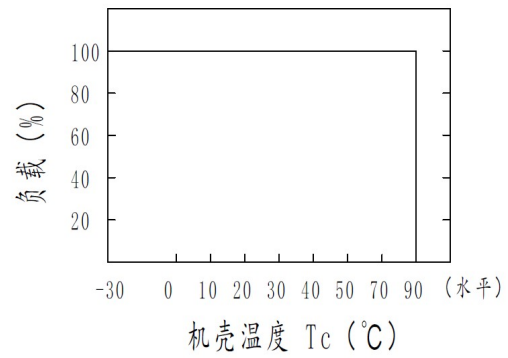
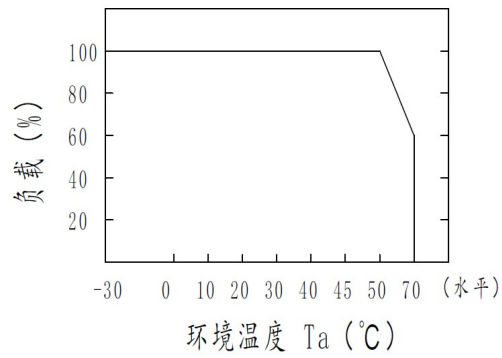
Specifications

Model		CYV-240-24 (AC100V)			
Output	DC voltage	24V			
	Rated current	8.35A			
	Current range	0~8.35			
	Rated power	200W			
	Ripple&Noise	350mVp-p			
	Voltage regulation range	--			
	Voltage accuracy	±3.0%			
	Line adjustment rate	±0.5%			
	Load adjustment rate	±2%			
	Rise time	1200ms, 25ms/115VAC load100%			
Hold up time(Typ)	15ms/115VAC load100%				
Input	Voltage range	90~132VAC			
	Frequency range	47~63HZ			
	PFC(Typ)	PF≥0.5			
	Efficiency(Typ)	≥91.5%			
	AC	115VAC	3.8A		
	Inrush current(Typ)	40A/115VAC			
	Leakage current	<1mA/240VAC			
Protections	Over load				
	Short circuit	Hiccup,auto recovery			
	Over voltage				
	Over temp.				
Environment	Working temp.	-30°C~+70°C (Refer to temperature derating curve)			
	Working humidity	20~95%RH no-condensing			
	Storage Temp.	-40°C~+85°C			
	Storage humidity	10~95%RH no-condensing			
	Temp. coefficient	±0.03%/°C (0~60°C)			
	Vibration resistance	10~500Hz, 2G, 10min/cycle, X、Y、Z 60min in each direction			
EMC	Safety Standards	Design refer to GB4943-2001, UL60950-1			
	Withstand voltage	I/P-O/P:3KV AC、I/P-FG: 1.5KV AC、O/P-FG: 0.5KV AC			
	Isolation resistance	I/P-O/P、I/P-FG、O/P-FG: >100MΩ/500VDC/25°C/70%RH			
Others	EMC	Design refer to GB9254,EN55015 class B			
	MTBF	100000 hours(25°C)			
	Size	192*56*36 (L*W*H)			
Remarks	Package	20pcs/carton, 0.64Kg			
		<p>*In order to extend the lifetime, it is recommended to configure the load more than 30% of the remaining allowance. For example: the power of the device requires 100W, then use the power of not less than 130W.</p> <p>*Ripple test method: 20MHz oscilloscope in power output terminal test, oscilloscope probe wire length is not more than 12mm, and input parallel 47uF electrolytic capacitors and 0.1uF high frequency capacitance probe.</p> <p>*All electrical performance tests are done at 25°C.</p>			

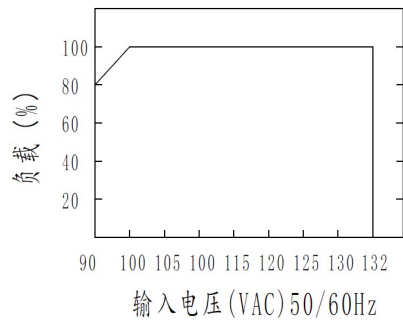


Load temperature drop curve

■ 输出负载 vs 温度:



■ 静态特性曲线:

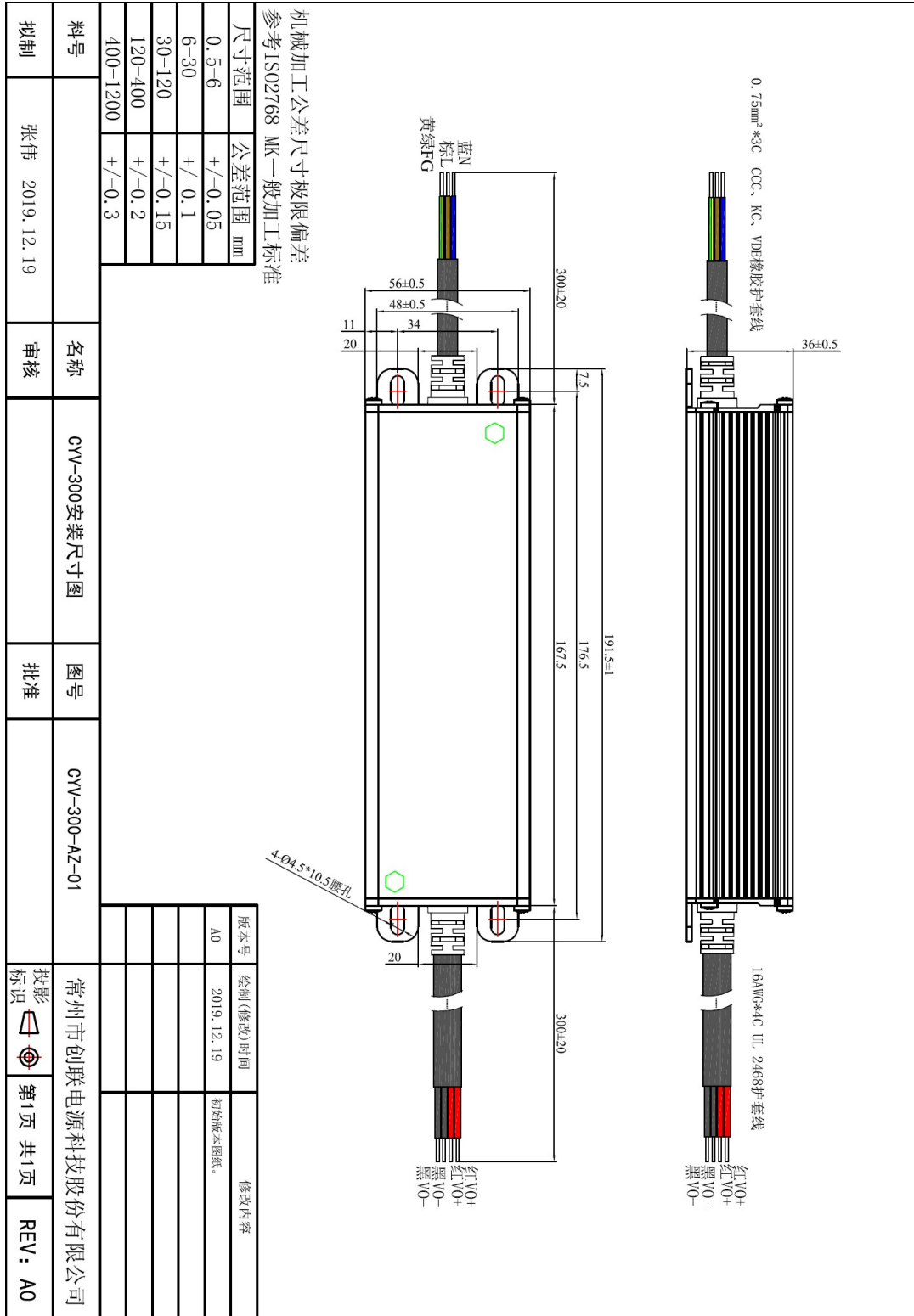


Label



CYV-240-24(AC110V)Waterproof Series

Installation drawing



尺寸范围	公差范围	mm
0.5-6	+/-0.05	
6-30	+/-0.1	
30-120	+/-0.15	
120-400	+/-0.2	
400-1200	+/-0.3	

料号	名称	图号	版本号	绘制(修改)时间	修改内容
	CYV-300安装尺寸图		A0	2019.12.19	初始版本图纸。

拟制	张伟	2019.12.19	审核		
批准			投影		
			标识		
			第1页	共1页	
			REV:	A0	

Pin No.	Assignment	Pin No.	Assignment