

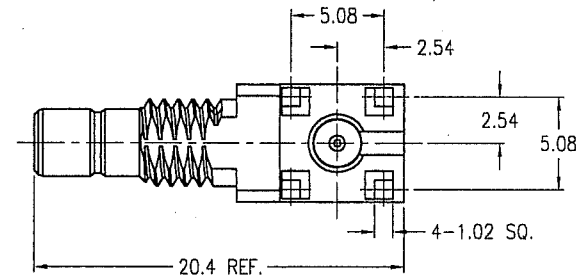
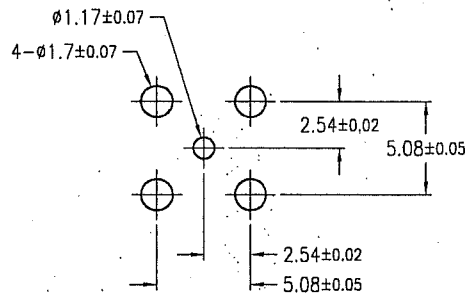
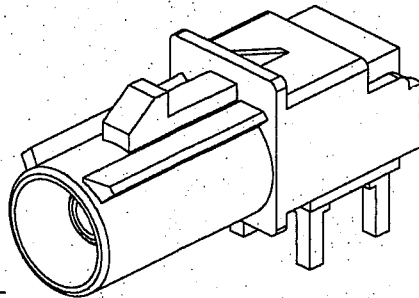
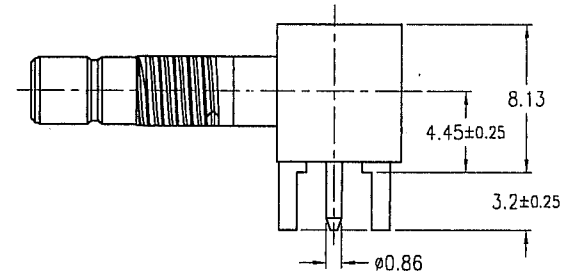
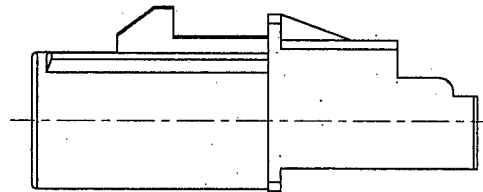
NOTES:

1. MATERIALS AND FINISHES(MICRO-INCHES)
 - BODY = ZINC DIECAST, MATTE TIN PL.100 MIN. THICK OVER NICKEL;
PL.100 MIN. THICK OVER COPPER PL.(250 MIN./300 MAX.) THICK
 - CONTACT = BRASS PER QQ-B-626; GOLD PL. 30 MIN. THICK
OVER NICKEL PL. 100 MIN. THICK OVER COPPER STRIKE
 - LOCK COVER = PBT (GF 15%),PER CHANG CHUN GRADE 4115202 OR EQUIVALENT
 - INSULATOR = TEFLON MIL-P-19468, COLOR: NATURAL.
2. ELECTRICAL:
 - A. IMPEDANCE: 50 OHM, NOMINAL
 - B. FREQUENCY RANGE: DC-6GHz (OPTIMIZED FOR DC -4GHz)
 - C. VSWR(RETURN LOSS): 1.4 (-15.6 dB), MAX.(DC-2GHz)
(MATED PAIR) 1.5 (-13.9 dB), MAX.(2-3GHz)
 - D. DIELECTRIC WITHSTANDING VOLTAGE: 800VRMS, MIN.
3. MECHANICAL:
 - A. DURABILITY: 100 CYCLES MIN.
 - B. TEMPERATURE RANGE: -65 °C TO 125 °C
4. PACKAGING:
 - A. QUANTITY: TRAY PACK
 - B. MARKING: TRAY TO BE MARKED
"AMPHENOL, FA1-NXRP-PCB-8, AND DATE CODE"

THIRD ANGLE PROJ.

REVISIONS

| REV | DESCRIPTION | DATE | ECO | APPR |
|-----|--|-----------|-------|--------|
| B | CHANG NOTE 4 PL. STANDARD\RD-DM06040501B | 05-Apr-06 | ----- | ANGELA |
| C | ADDED N KEY CODING \RD-DM93081001L | 26-Sep-07 | ----- | ANGELA |
| D | ITEM 4 WAS 903-10605 \RD-DM08100701S2 | 17-Nov-08 | 45685 | ANGELA |



TABLE

| KEY CODING | COLOR | PART NO. |
|------------|----------------|----------------|
| A | JET BLACK | FA1-NARP-PCB-8 |
| B | CREAM | FA1-NBRP-PCB-8 |
| C | SIGNAL BLUE | FA1-NCRP-PCB-8 |
| D | CLARET VIOLET | FA1-NDRP-PCB-8 |
| E | LEAF GREEN | FA1-NERP-PCB-8 |
| F | NUT BROWN | FA1-NFRP-PCB-8 |
| G | BLUE GREY | FA1-NGRP-PCB-8 |
| H | HEATHER VIOLET | FA1-NHRP-PCB-8 |
| I | BEIGE | FA1-NIRP-PCB-8 |
| K | CURRY | FA1-NKRP-PCB-8 |
| L | CARMINE RED | FA1-NLRP-PCB-8 |
| M | PASTEL ORANGE | FA1-NMRP-PCB-8 |
| N | PASTEL GREEN | FA1-NNRP-PCB-8 |
| Z | WATER BLUE | FA1-NZRP-PCB-8 |

RECOMMENDED
P.C.B LAYOUT

CONFIGURATION CONTROL:
NO CHANGES PERMITTED TO DRAWING WITHOUT
PPAP-QUALIFIED CUSTOMER APPROVAL

CUSTOMER OUTLINE DRAWING

ALL OTHER SHEETS ARE FOR INTERNAL USE ONLY

| | | | | | | | |
|---|-----------|--|-------------------|---|------------------|--|----------------------------|
| UNLESS OTHERWISE SPECIFIED, DIMENSIONS ARE IN METRIC AND TOLERANCES ARE: 0.5 - 6mm ±0.1mm 6 - 30mm ±0.2mm 30 - 120mm ±0.3mm ANGLES ±1° | MATERIAL | DRAWN JACK | DATE 14-Jul-05 | TITLE FAKRA PLUG, PCB MOUNTED, R/A CONTACT | | Amphenol RF Danbury CT USA, Tainan Taiwan, Shenzhen China www.amphenolrf.com | |
| | REFERENCE | ENGINEER LIGHTER | DATE 14-Jul-05 | SCALE: 2.5/1 | | DRAWING NO. FA1-NXRP-PCB-8 | |
| NOTICE - These drawings, specifications, or other data (1) are, and remain the property of Amphenol Corp. (2) must be returned upon request; and (3) are confidential and not to be disclosed to any person other than those to whom they are given by Amphenol Corp. The furnishing of these drawings, specifications, or other data by Amphenol Corp., or to any other person to anyone for any purpose is not to be regarded by implication or otherwise in any manner licensing, granting rights or permitting such holder or any other person to manufacture, use or sell any product, process or design, patented or otherwise, that may in any way be related to or disclosed by said drawings, specifications, or other data. | FINISH | APPROVED SCOTT | DATE 14-Jul-05 | DWG SIZE B | CODE ID 74868 | REV D | ITEM NO. FA1-NXRP-PCB-8 |
| | | CAD FILE F:\DWG\CNPD\FA1\NXRP\PCB\8-DSZ | | | | | |