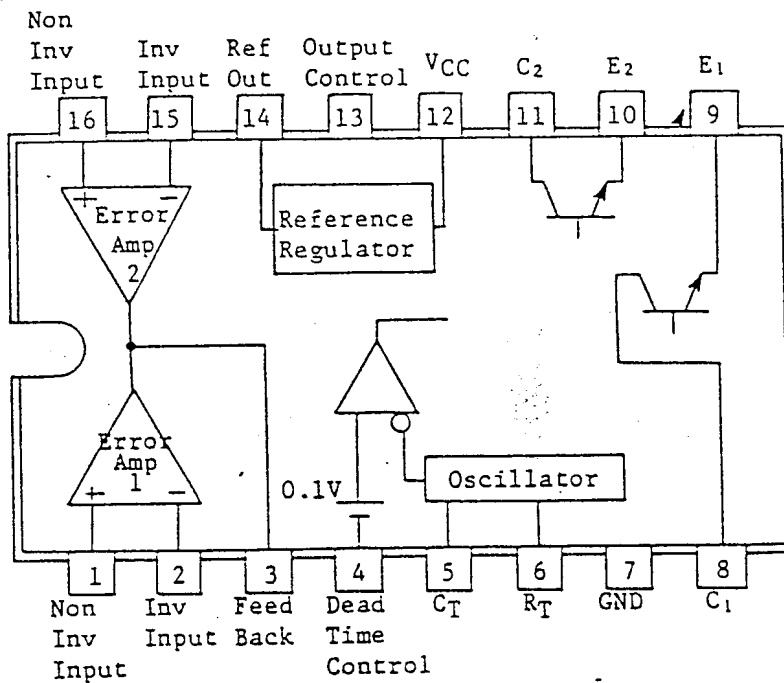




1. General Description .

The IR3M02 is a upgraded version of the IR9494 Pulse Width Modulation Type Switching Regulator Control IC with the added feature of low-voltage error preventive circuit. The IR9494 TL-494 and MB-3759 are all pin compatible.

2. Pin Configuration



3. Maximum Ratings

Parameter	Symbol	Rating	Unit	Remarks
Supply Voltage	VCC	41	V	
Input Voltage	VI	VCC + 0.3	V	Pin 1, 2, 15, 16
Output Voltage	VC	41	V	Pin 3, 11
Output Current	IC	250	mA	"
Power Dissipation (25°C)	PC	1000	mW	Derating ratio 10 mW/°C (Ta>25°C)
Operating Temperature Range	ToPr	-25 ~ +85	°C	
Storage Temperature Range	Tstg	-65 ~ +150	°C	



4. Recommended Operating Conditions

Parameter	Symbol	Rating			Unit	Remarks
		Min.	Typ.	Max.		
Supply Voltage	V _{CC}	7	15	40	V	
Input Voltage	V _I	-0.3		V _{CC} -2	V	
Output Voltage	V _C			40	V	
Output Current	I _C	5	100	200	mA	
Output Current on Reference Voltage	I _{REF}		5	10	mA	
Outgoing Current	I _{OSO}			2	mA	Outgoing into Pin 3
Incoming Current	I _{OSI}			0.3	mA	Incoming into Pin 3
Timing Capacitance	C _T	470		68000	pF	
Timing Resistance	R _T	1.8		500	KΩ	
Oscillator Frequency	f	1		300	KHz	

5. Electrical Characteristics

(V_{CC}=15V, T_a=25°C)

Parameter	Symbol	Rating			Unit	Conditions
		Min.	Typ.	Max.		
Reference Voltage Source						
Output Voltage	V _{REF}	4.75	5.0	5.25	V	I _O =1mA
Input Stability			2	25	mV	7V ≤ V _{CC} ≤ 40V
Output Stability			-1	-15	mV	1mA ≤ I _O ≤ 10mA
Thermal Stability			0.3	1.5	%	-25°C ≤ T _a ≤ 85°C
Short-circuit Output Current	I _{REF}	15	40		mA	
Output Inhibit Voltage on Low-Voltage Supply			4.3		V	
Above Hysteresis Width			0.3		V	

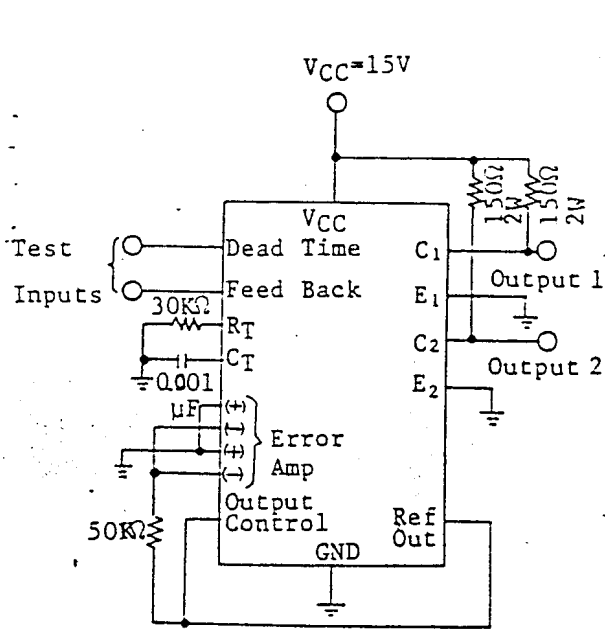


Parameter	Symbol	Rating			Unit	Conditions
		Min.	Typ.	Max.		
Oscillator Circuit						
Frequency	f	36	40	44	KHz	$R_T=30K\Omega, C_T=1000pF$
Frequency Setting Accuracy			± 3		%	V_{CC}, C_T, R_T, T_a fixed
Frequency Input Stability			± 0.1		%	$7V \leq V_{CC} \leq 40V$
Frequency Thermal Stability				3	%	$-25^\circ C \leq T_a \leq 85^\circ C$
Halt Time Setting Circuit						
Input Bias Current	I_B		-2	-10	μA	$0 \leq V_I \leq 5.25V$
Output Maximum Duty		40	45		%	$V_I=0$
Input Voltage (Pin 4)	V_I		3.0	3.3	V	0% Duty
		0			V	Max. Duty
Error Amp						
Input Offset Voltage	V_{IO}		2	10	mV	$V_O(\text{pin } 3)=2.5V$
Input Offset Current	I_{IO}		25	250	nA	$V_O(\text{pin } 3)=2.5V$
Input Bias Current	I_B		-0.2	-1.0	μA	$V_O(\text{pin } 3)=2.5V$
Common Input Voltage Range	V_{CM}	-0.3		$V_{CC}-2$	V	$7V \leq V_{CC} \leq 40V$
Open Voltage Gain	A_v	70	95		dB	$0.5V \leq V_O \leq 3.5V$
GB Product	G·B		800		KHz	
Common Signal Rejection Ratio	CMR	65	80		dB	$V_{CC}=40V$
Output Sink Current	I_{OSi}	0.3	0.7		mA	$-5V \leq V_{ID} \leq -15mV, V_O=0.7V$
Output Source Current	I_{OSO}	-2	-10		mA	$15mV \leq V_{ID} \leq 5V, V_O=3.5V$

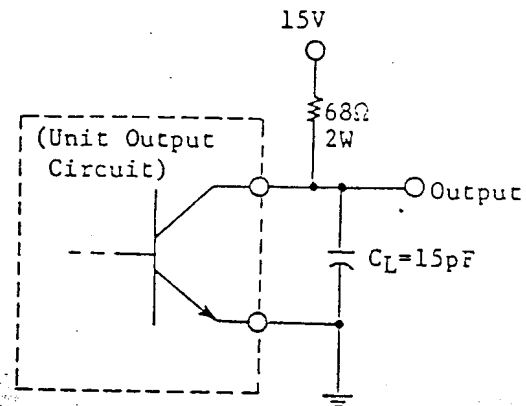
SHARP

Parameter	Symbol	Rating			Unit	Conditions
		Min.	Typ.	Max.		
Output Circuit						
Off-state Corrector Current				100	μA	V _{CC} =40V, V _C =40V
Off-state Emitter Current				-100	μA	V _{CC} =V _C =40V, V _E =0
Output Saturation Voltage	Common Emitter	V _{CE sat}	1.1	1.3	V	V _E =0, I _C =200mA
	Common Collector	V _{CE sat}	1.5	2.5	V	V _C =15V, I _E =-200mA
Output Control Input Current (Pin 13)			1.3	3.5	mA	V _I =V _{REF}
PWM Comparator						
Input Voltage (Pin 3)	V _I		4	4.5	V	0% Duty
Input Current (Pin 3)		0.3	0.7		mA	V _O (pin 3)=0.7V
Whole Circuitry				15	mA	
Static Supply Current	I _{CC1}		7	12	mA	V(pin 6)=V _{REF} , I/O Pin Open
Supply Current (Standard Connection)	I _{CC2}		8		mA	V ₄₋₇ =2V Fig.1
Output Switching Characteristics						
Rise Time	trc		100	200	ns	Common Emitter, R _L =68Ω Fig.2
Fall Time	tfc		25	100	ns	
Rise Time	tre		100	200	ns	Common Collector R _L =68Ω Fig.3
Fall Time	tfe		40	100	ns	

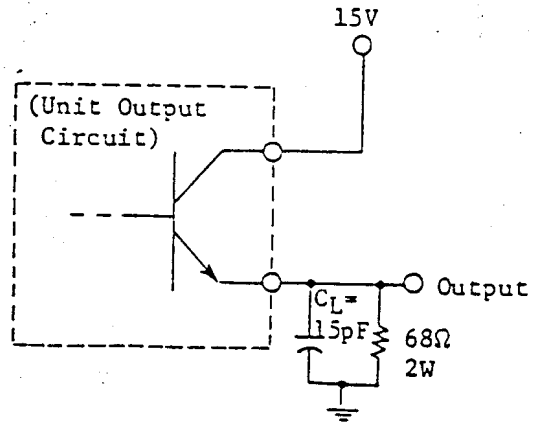
SHARP



(Fig. 1)



(Fig. 2)



(Fig. 3)



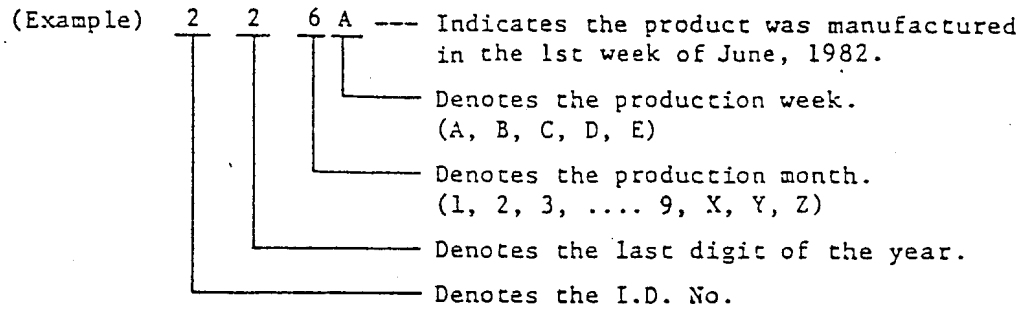
1. Package Specification

Refer to Drawing No. AA640-025.

2. Markings

2-1. Marking contents

- (1) Product name: IR3M02
- (2) Company name: **SHARP**
- (3) Date code:



2-2. Marking positions

Refer to Drawing No. AA640-025.

2-3. Marking color

Silver

3. Crating Specification

3-1. Crating materials

Crating parts	Parts materials	Purposes
Tube	Conductive plastic (25 devices per tube)	Device crating
Stopper	Plastic	Device fixing
Label	Paper	Indication of product name, quantity and production date.
Inside crating case	Cardboard	Inside crating of tubes
Outside crating case	Cardboard	Outside crating of tubes

MODEL No	IR3M02	PAGE	7
----------	--------	------	---

SHARP

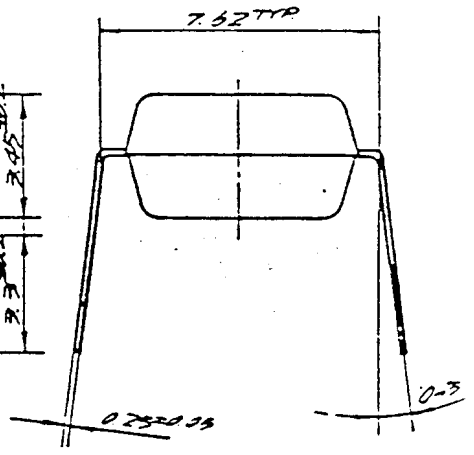
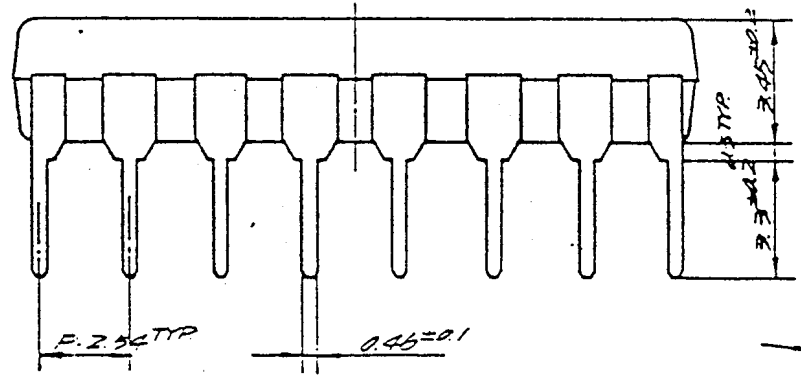
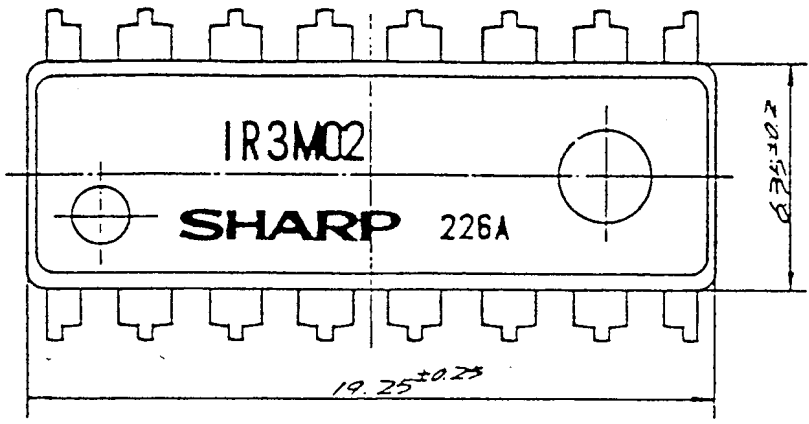
3-2. External view of crated products

Refer to Drawing No. BJ023-00.

Precaution for unpacking

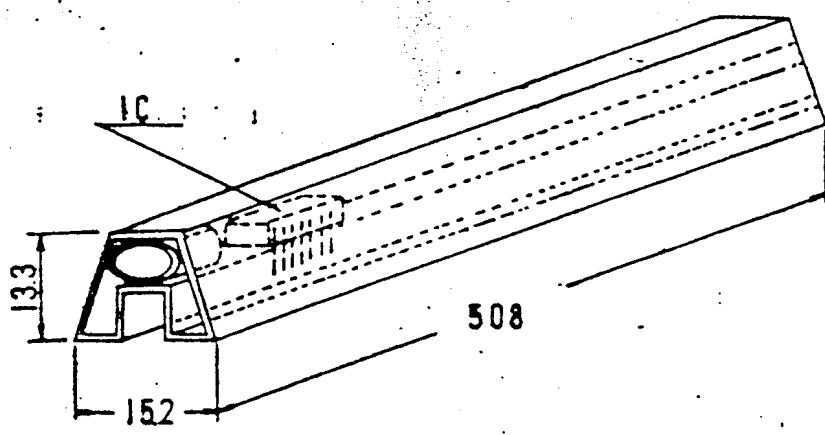
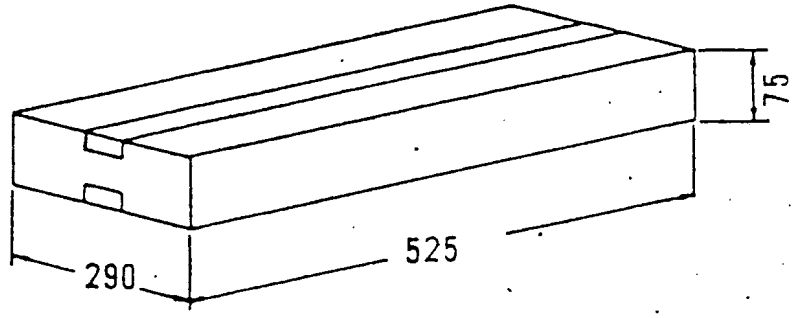
- 1) Unpacking should be done on the stand as well as a human body treated with anti-ESD.
- 2) Conductive treatment or anti-ESD treatment is given to a tube. Use the equivalent tube, if it is changed to another one.
- 3) Be sure to fix two stoppers to both ends of a tube when storage to prevent the devices from slipping.

SHARP



適用規格 APPLICABLE MODEL	IR3M02	尺寸 SCALE	5/1	單位 UNIT	1 = 1/1 mm	△	
厚度 THICKNESS	数量 PIECES	材質 MATERIAL		加工 FINISH	Sn plating	設計 DATE	設計者 REVISION
						番 号 NAME	DPT16DP
日付 DATE		設計 DRAW	TRACE	CHECK	APPROVE	コ ー 下 CODE	
		SHARP CORPORATION				図 号 DRAWING No	AA 640-025

SHARP



△ . . .		適用機種 MODEL		名 稱 NAME		IC	
△ . . .		IR3M02		PACKING CASE			
年 月 日 DATE	訂 正 記 事 REVISE	板 厚 THICKNESS	尺 寸 SCALE	3角図法	具 数 PIECES	単 位 UNIT	/ M
材 質 MATERIAL	仕 上 FINISH				コ ー 丁 CODE		
設 計 DESIGN	製 図 DRAW	不 通 TRACK	檢 査 CHECK	認 可 APPROVE	日 付 DATE	57 . 9 . 7 .	
SHARP CORPORATION					圖 番 DRAWING NO.	B 1 0 2 3 - 0 0	