

KDE4213XF-360 (HE) KDE DIRECT UAS BRUSHLESS MOTOR  
PRODUCTION RELEASE



KDE DIRECT UAS BRUSHLESS MOTOR SPECS.

- Ø 6mm Core Shaft
- Ø 4mm, 5.5mm Extended Length
  - Shaft Flush with Retaining Collar
  - M4 x 0.7 x 6mm FBHSCS

- 696ZZ Upper Bearing (Ø 6mm x Ø 15mm x 5mm)
  - Double Upper Bearings
- 606ZZ Lower Bearing (Ø 6mm x Ø 17mm x 6mm)

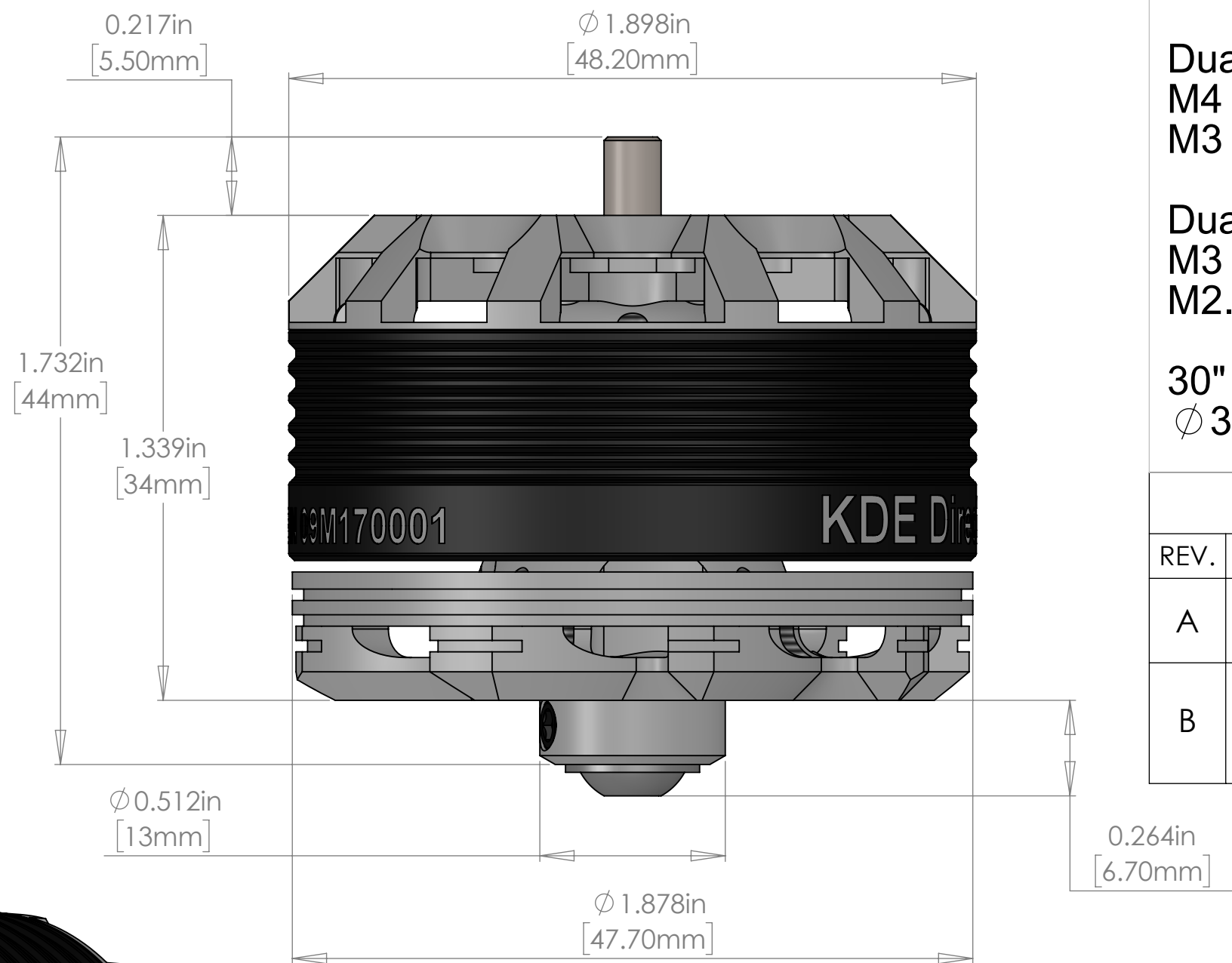
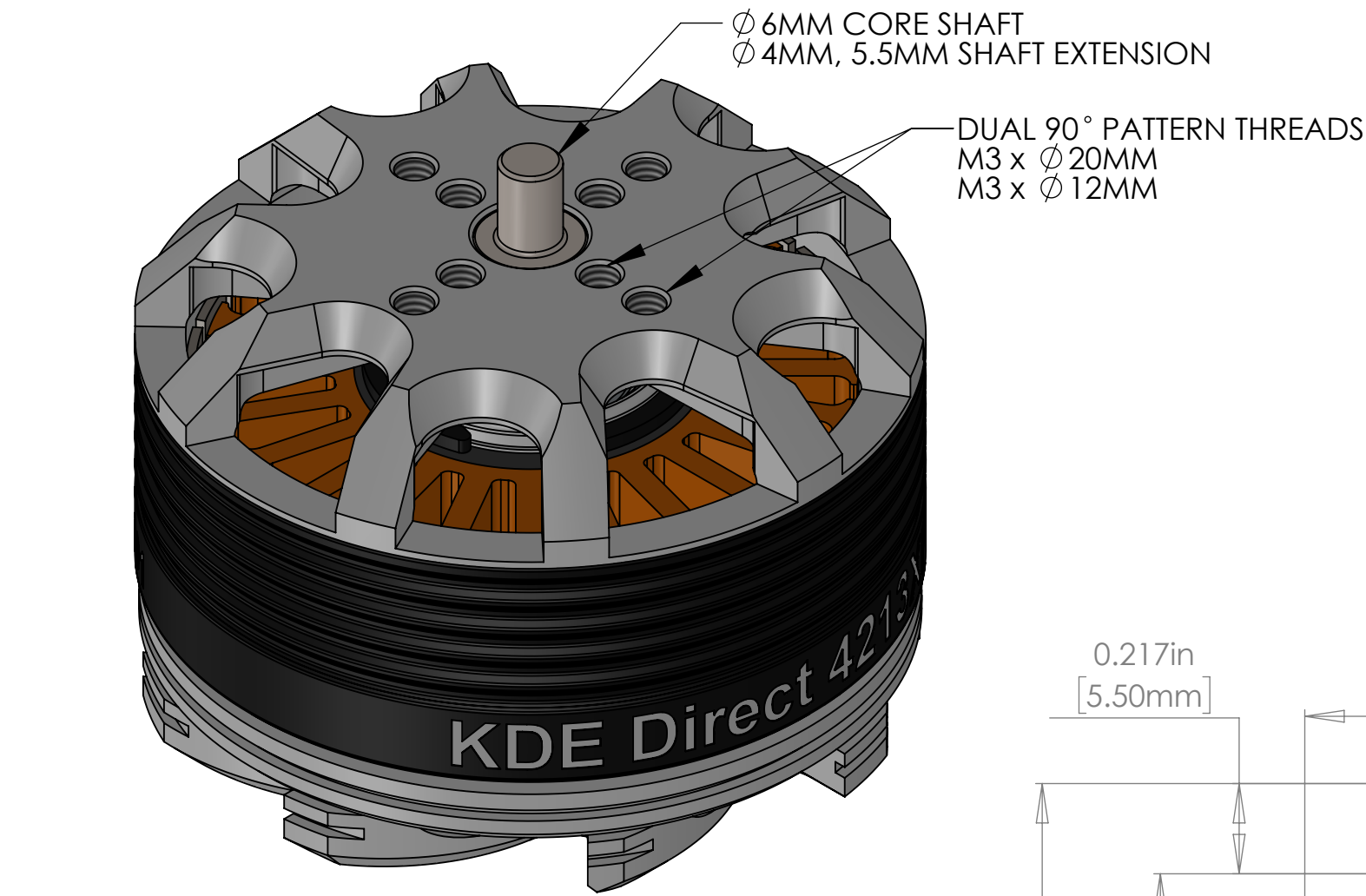
- Dual 90° Pattern Threads:
  - M3 Threads x Ø 20mm Spacing
  - M3 Threads x Ø 12mm Spacing

- Dual 90° Pattern Threads:
  - M4 Threads x Ø 25mm Spacing
  - M3 Threads x Ø 25mm Spacing

- Dual 120° Pattern Threads:
  - M3 Threads x Ø 32mm Spacing
  - M2.5 Threads x Ø 32mm Spacing

- 30" Exit Lead Extensions (15 AWG)
  - Ø 3.5mm 24k Bullets, Pre-Soldered and Shrink Wrap

REVISIONS			
REV.	DESCRIPTION	DATE	APPROVED
A	Initial Production Release	07/31/2017	KDE
B	Shaft modified to fit a M4x6mm flanged button head socket screw for better rotor retention	07/01/2019	KDE



- DUAL 120° PATTERN THREADS  
M3 x Ø 32MM  
M2.5 x Ø 32MM
- DUAL 90° PATTERN THREADS  
M4 x Ø 25MM  
M3 x Ø 25MM

OVERSIZED 606ZZ RADIAL BALL BEARING

SHAFT MACHINED FLUSH TO COLLAR

M4 x 0.7 x 6MM FLANGED BUTTON HEAD SOCKET CAP SCREW ADDED REV B

