

LC1000A / LC2000B

Product description

LED-WIFI music controller is specially designed for decorative lighting, lighting and other fields. A universal and powerful controller developed by the company. There are three products in this series.

Product parameters

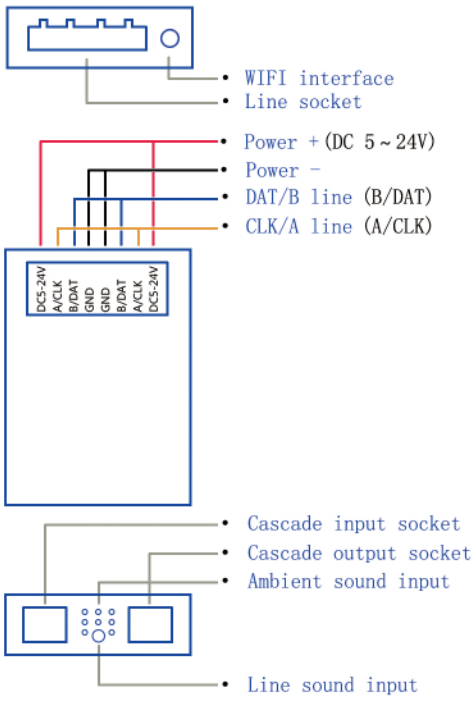
Models	LC1000A	LC1000B
Size	L69 x W45 x H15	L120 x W65 x H24
Points	8~1024	8~2048
Vin	DC5~30V	
Control type	App Control	
Speed Level	32 Levels	
RGB Settings	Arbitrary settings of RGB-RBG-GRB-GBR-BRG-BGR line sequence	
Effect	Spectrum + Text input + More than 250 effects	
Music Spectrum	Enviromental music / Line unput control	
Config Save	Automatic parameter saving	
Signal Mode	TTL-DAT/CLK	TTL-DAT/CLK DMX512-1990
Sync Type	Asynchrony	Network cable cascade can work synchronously



LED Colorful
Google Play



Installation



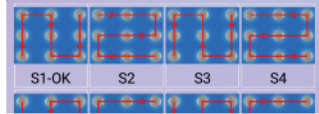
• Note: The installation diagram is based on "LC2000B", and the wiring of other models in the same series. The actual housing instructions will prevail.

first time using

1. Scan QR code to download and install.
2. Connect to the wifi hotspot (Start with "LC") and enter the default password "88888888".
3. Open the app and enter the settings, select the chip model.



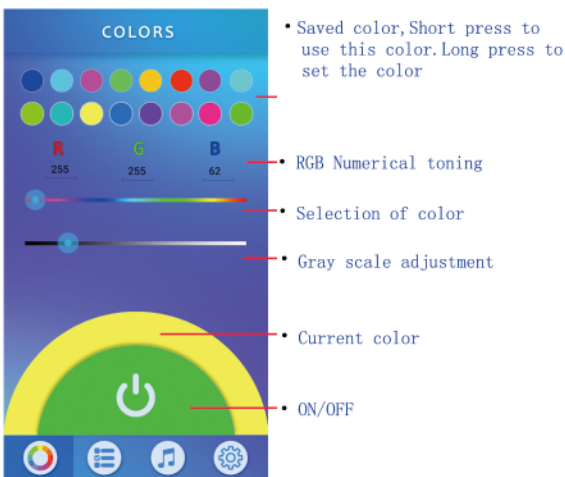
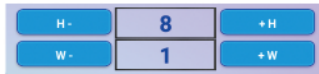
4. Select wiring type.



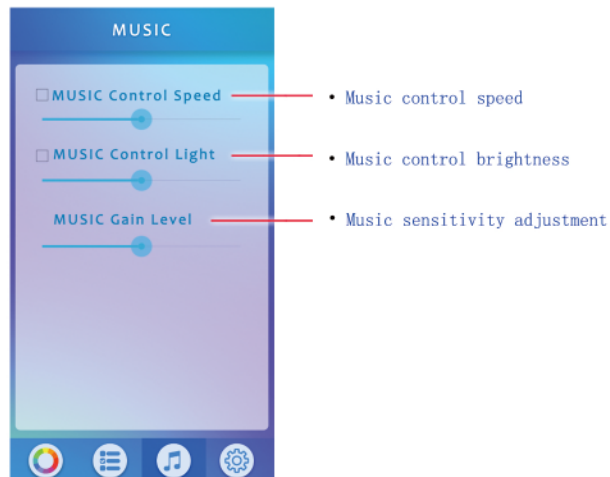
5. Set LED color order, observe the color of the current LED color and click the corresponding "R" "G" "B" button.



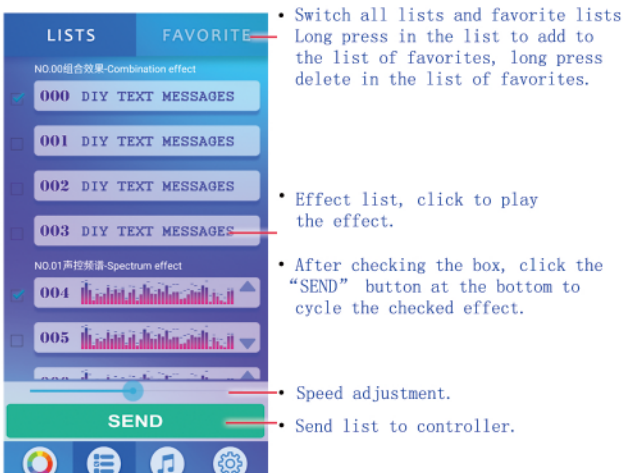
6. Set the number of points, set height and width separately.



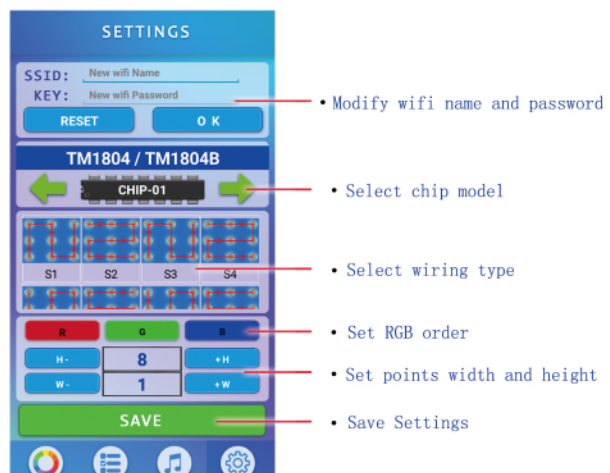
- Saved color, Short press to use this color. Long press to set the color
- RGB Numerical toning
- Selection of color
- Gray scale adjustment
- Current color
- ON/OFF



- Music control speed
- Music control brightness
- Music sensitivity adjustment



- Switch all lists and favorite lists. Long press in the list to add to the list of favorites, long press delete in the list of favorites.
- Effect list, click to play the effect.
- After checking the box, click the "SEND" button at the bottom to cycle the checked effect.
- Speed adjustment.
- Send list to controller.



- Modify wifi name and password
- Select chip model
- Select wiring type
- Set RGB order
- Set points width and height
- Save Settings