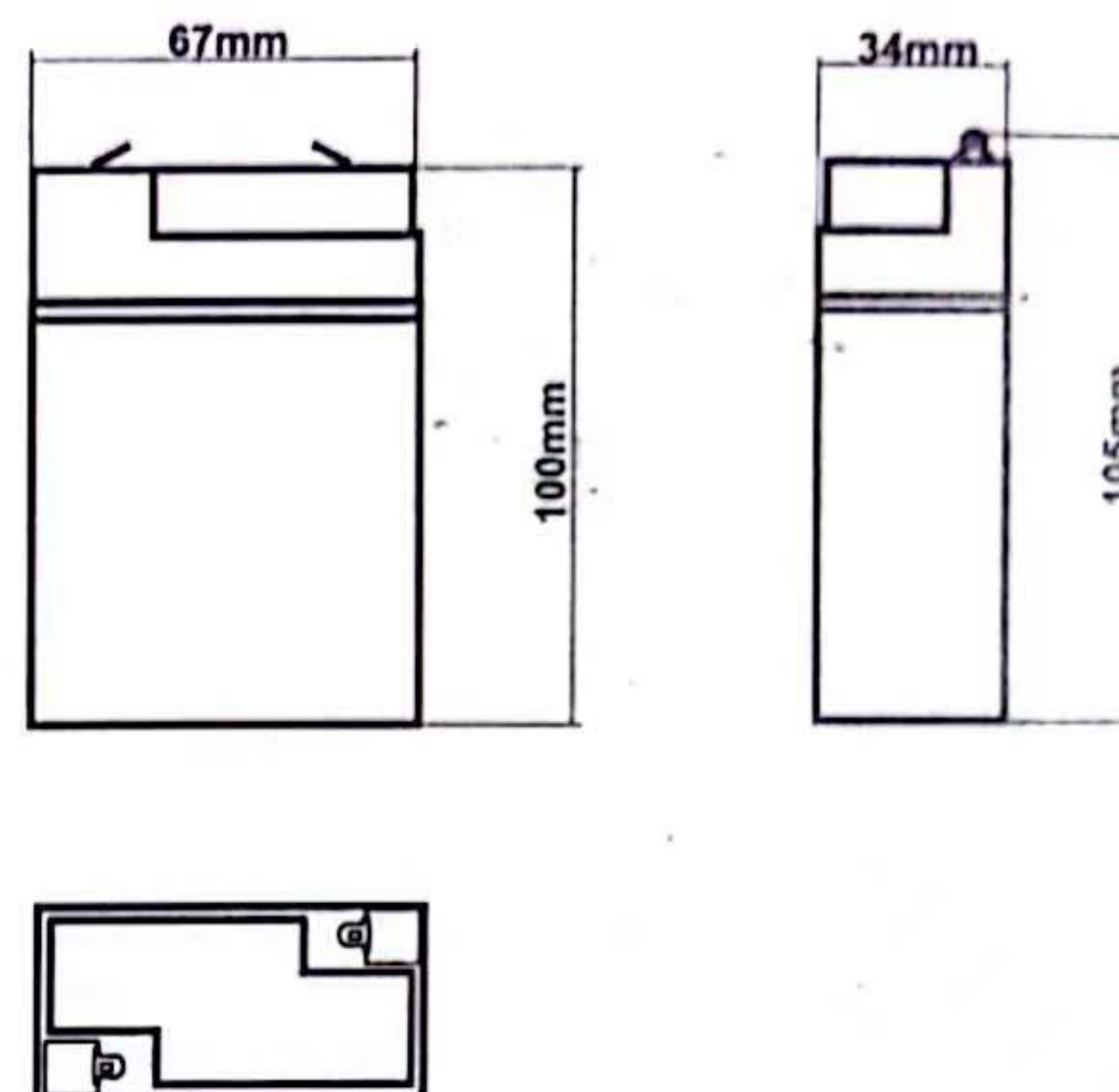


# PM2.8-6



## Specifications

Nominal Voltage		6V
Rated Capacity(20 hour rate)		2.8AH
Dimension	Total Height (with terminals)	105mm(4.13inches)
	Height	100mm(3.94inches)
	Length	67mm(2.64inches)
	Width	34mm(1.34inches)
Weight		Approx.0.55kg

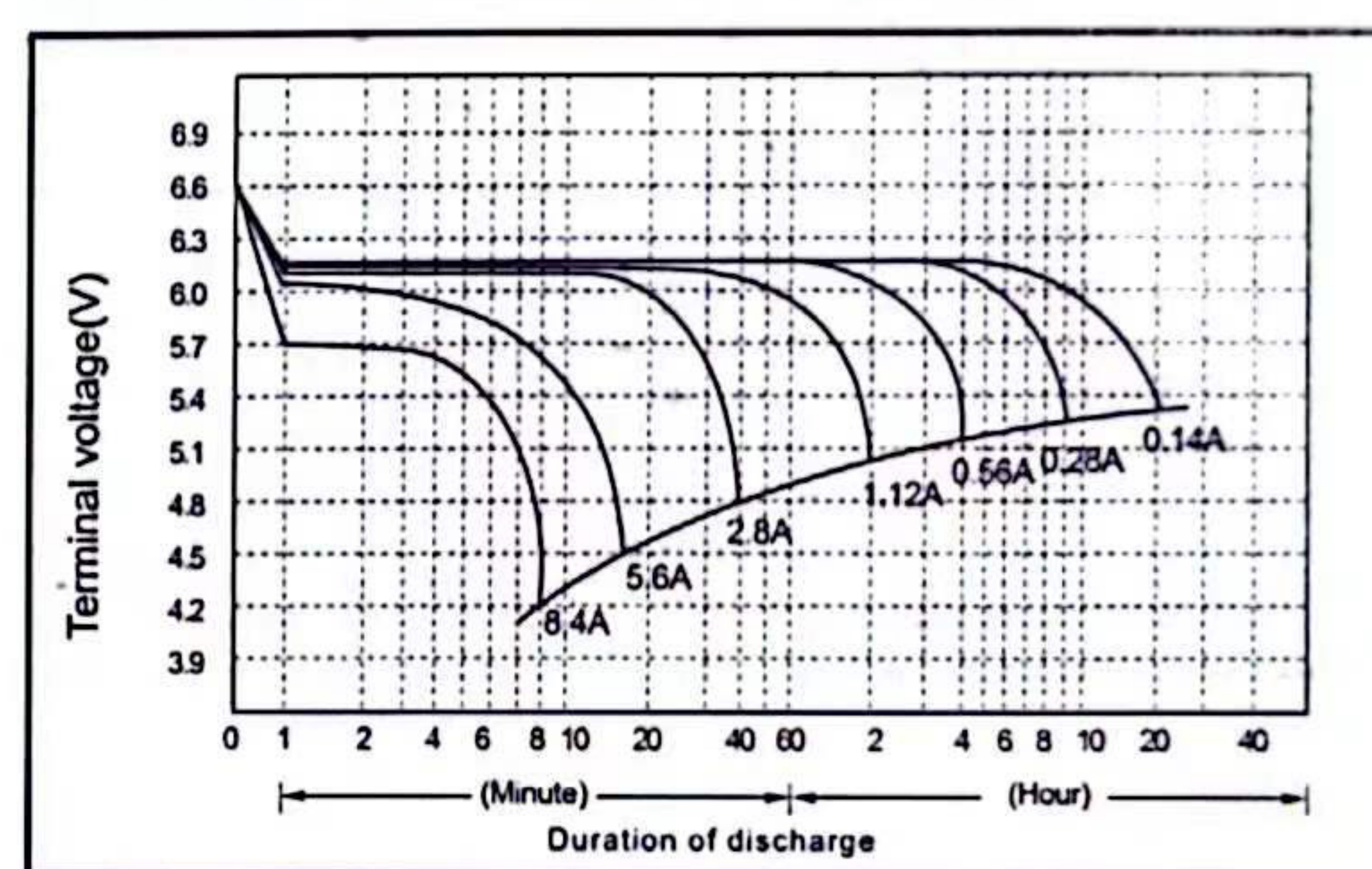
## Characteristics

Capacity 77°F(25°C)	20 hour rate (140mA)	2.8AH
	10 hour rate (260mA)	2.6AH
	5 hour rate (476mA)	2.38AH
	1 hour rate (1.68A)	1.68AH
	15 min rate (5.04A)	1.26AH
Internal Resistance	Full charged Battery 77°F(25°C)	36mΩ
Capacity affected by Temperature (20 hour rate)	104°F(40°C)	102%
	77°F(25°C)	100%
	32°F(0°C)	85%
	5°F(-15°)	65%
Self-Discharge 77°F(25°C)	Capacity after 3 month storage	91%
	Capacity after 6 month storage	82%
	Capacity after 12 month storage	64%
Max. Discharge Current 77°F(25°C)	14A	
Terminal	Standard	F1
	Optional	
Charging (Constant Voltage)	Cycle	7.25V~7.45V/77°F(25°C)<0.56A
	Float	6.8~6.9V/77°F(25°C)

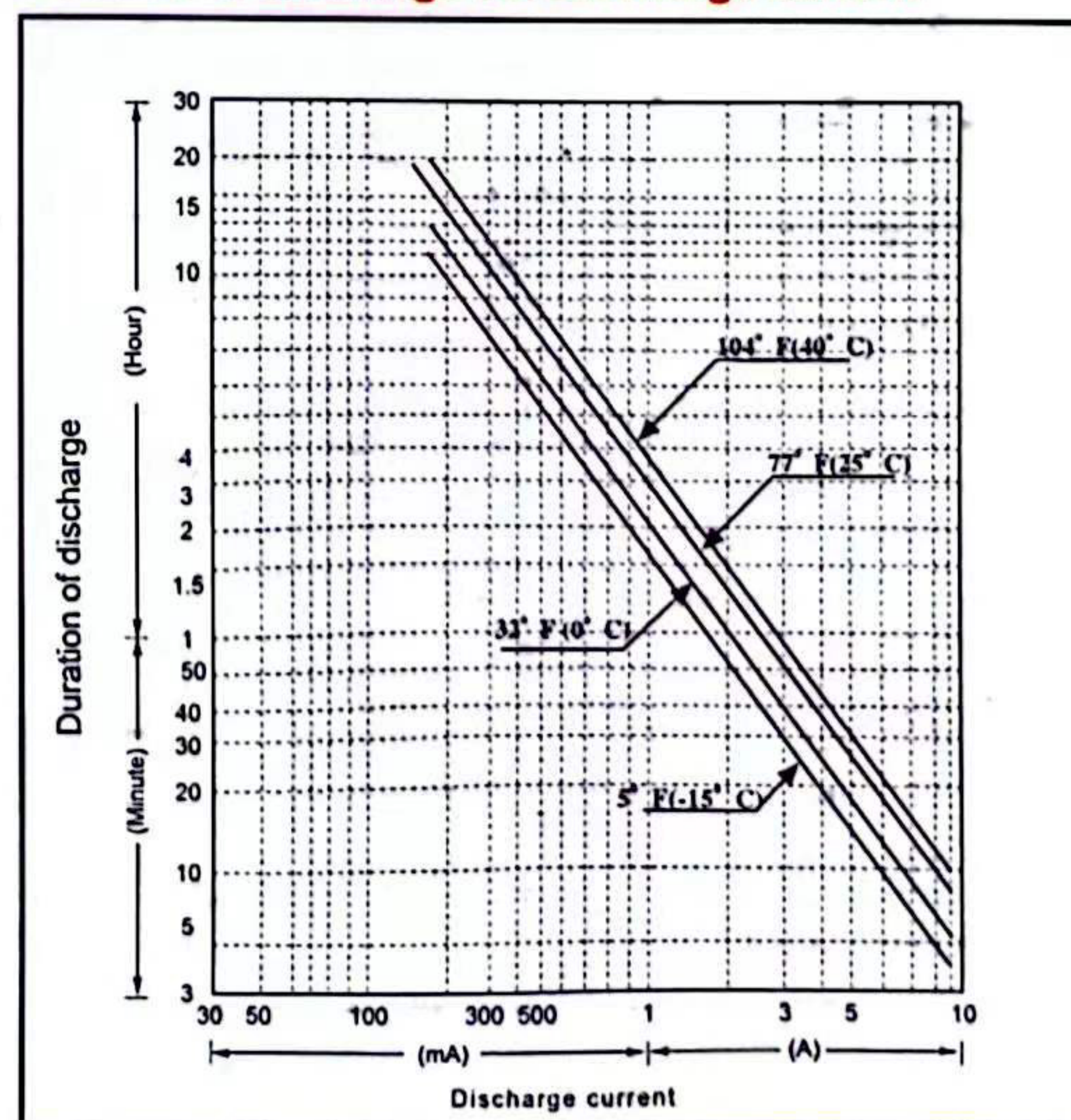
## Constant wattage discharge (Watts/battery @ 25°C)

EV/CELL	5min	10min	30min	1H	3H	5H	8H	10H	20H
1.85V	32.3	25.5	13.4	8.7	3.9	2.6	1.8	1.5	0.7
1.80V	40.4	29.6	15.0	9.1	4.0	2.6	1.8	1.5	0.8
1.75V	42.0	29.8	15.5	9.4	4.2	2.7	1.8	1.5	0.8
1.70V	44.9	31.1	15.9	9.8	4.2	2.8	1.9	1.5	0.8
1.60V	49.2	33.5	16.4	10.1	4.2	2.8	1.9	1.5	0.8

## Discharge characteristics 77°F(25°C)



## Duration of discharge vs. Discharge current



**Note** The above data are average values, and can be obtained within 3 charge/discharge cycles. These are not minimum values.

## PALMA BATTERY

This information is generally descriptive only and is not intended to make or imply any representation, guarantee or warranty with respect to any cells and batteries. Cell and battery designs/specifications are subject to modification without notice. Contact Palma for the latest information.