

RELIFE RL-049B

CPU GLUE REMOVAL Crowbar Set

Flexible and thin

- All-in-one design
- Ultra-thin cutter head,
as thin as 0.1mm
- Rich variety of cutter heads

Can satisfy the disassembly of mobile phone CPU/SSD solid state drive/flash memory/BGA and other chips



Quickly remove glue



Ultra-thin cutter head



Featured materials

Double-sided Cutter Head

A set of 5 heads with 10 kinds of cutter heads, with a wide variety of cutter heads and a wide range of applications
Can satisfy the disassembly of mobile phone CPU/SSD solid state drive/flash memory/BGA and other chips



▲ Remove IC/tap rubber

Spatula ▲



▲ Shovel the back of the CPU/middle layer glue

Remove IC/tap rubber ▲



▲ Remove the upper layer of the A4-A9 CPU

Tapping rubber ▲



▲ Spatula

Used for mobile phone frame separation ▲



▲ Motherboard separation

Spatula ▲

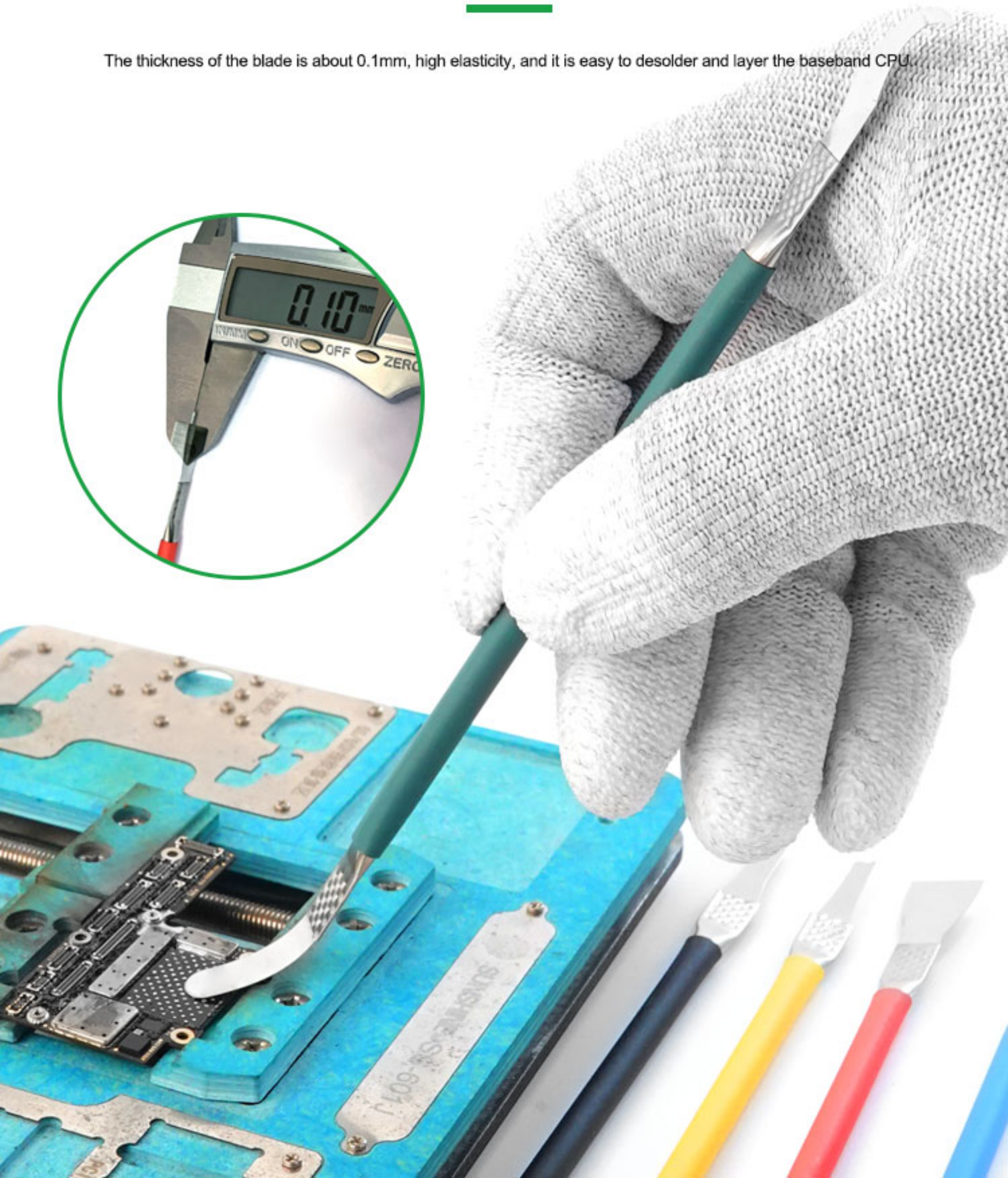
All-in-one Design

The blade and the handle are integrated, avoiding the disassembly and assembly of the blade, saving time



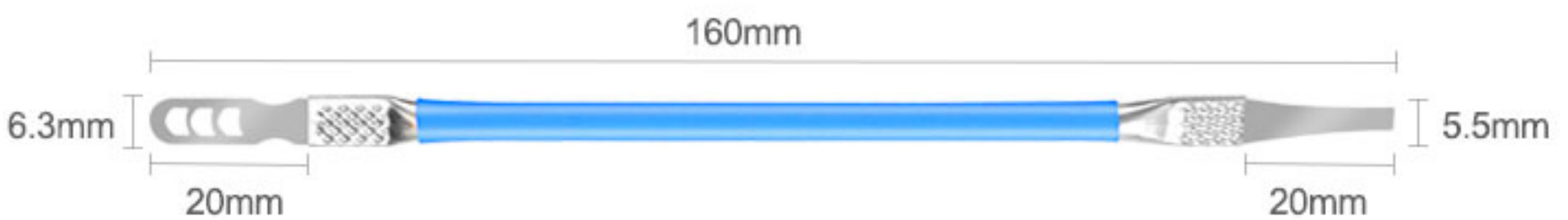
Flexible And Thin Not Easy To Deform

The thickness of the blade is about 0.1mm, high elasticity, and it is easy to desolder and layer the baseband CPU.



PRODUCT INFORMATION

Note: Manual measurement will have \pm tolerance, which is for reference only, please refer to the actual product



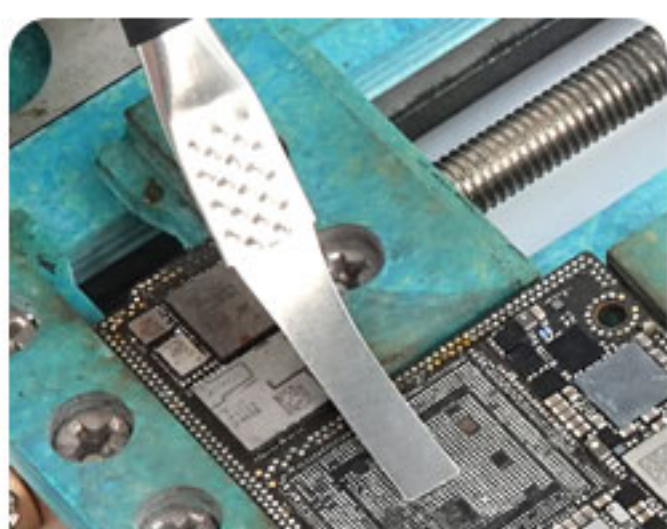


215mm

76mm

BRAND	RELIFE
PRODUCT NAME	Glue removal stick set
MODEL	RL-049B
NET WEIGHT	About 16.5g (5 Sticks)
GROSS WEIGHT	About 31.5g/Set About 1.65kg/Box About 18kg/Carton
PRODUCT SIZE	±160*6.7*5mm/Piece
PACKAGE SIZE	7.8*215*76mm/Set 230*220*140mm/Box 470*480*370mm/Carton
QUANTITY	50 Sets/Box 500 Sets/Carton
BE APPLICABLE	Chip removal/edge cleaning glue/scratch pad/ removal of motherboard parts, etc.

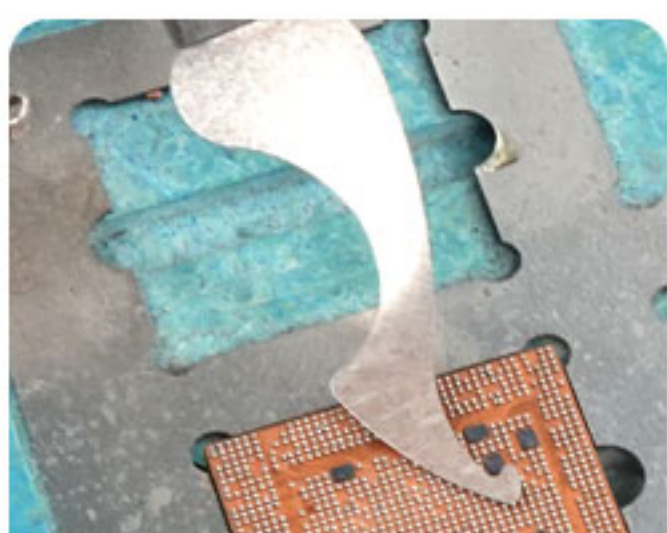
USE SCHEMATIC



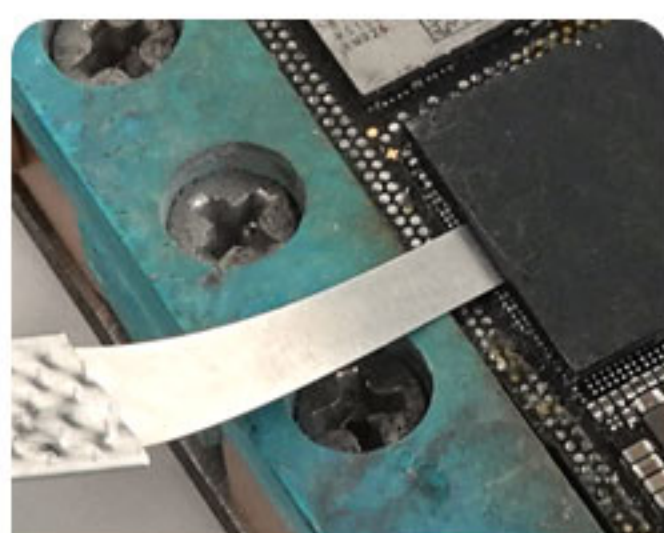
Spatula



Remove IC/tap rubber



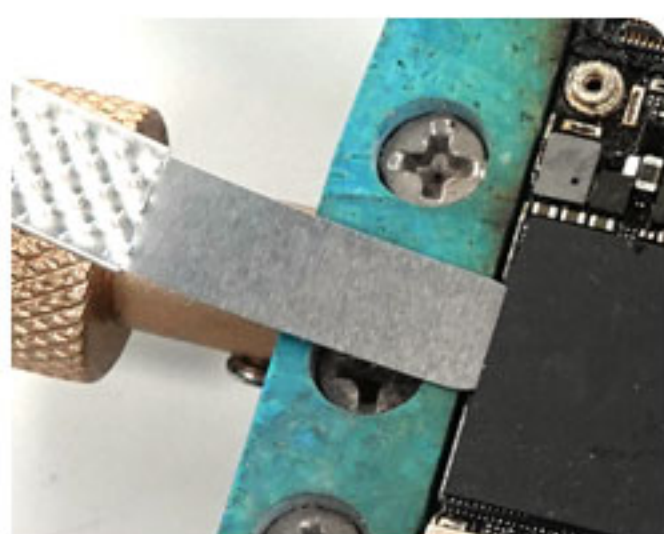
Shovel the back of the CPU/middle layer glue



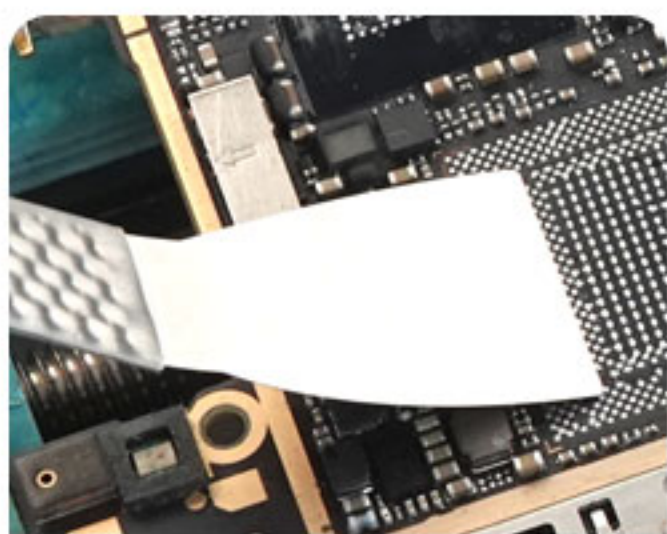
Remove IC/tap rubber



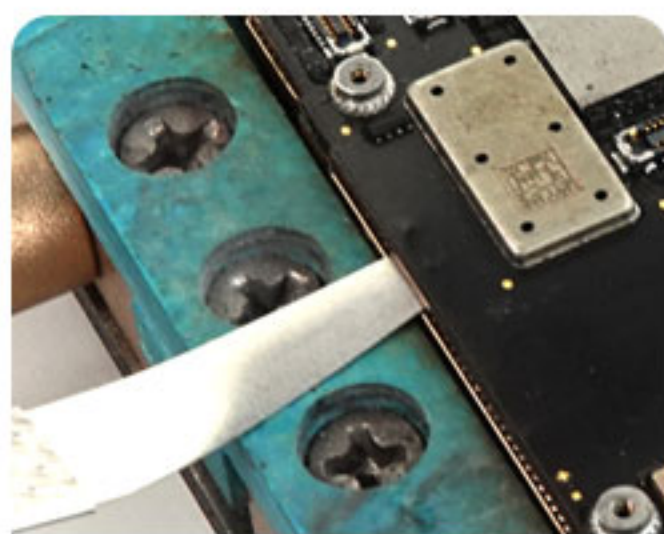
Tapping rubber



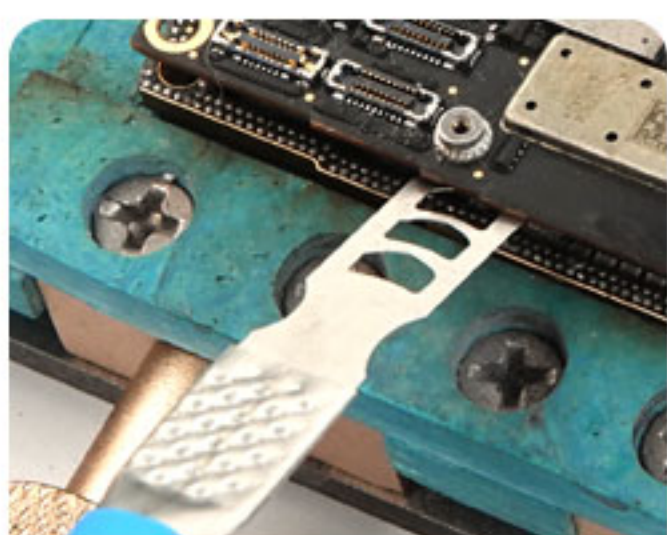
Remove the upper layer of the A4-A9 CPU



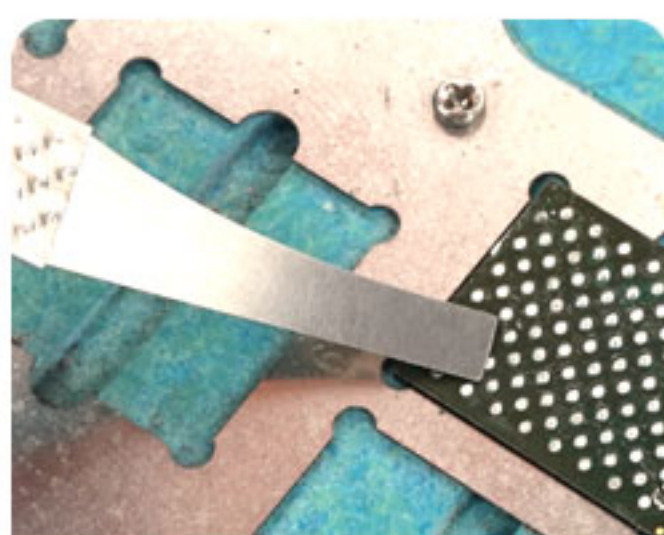
Spatula



Used for mobile phone frame separation



Motherboard separation



Spatula