

REPAIR SYRINGE SOLDER PASTE

Multiple melting points optional/Fine and smooth paste/Good adhesion/

Plump solder joints /SMT wick effect is strong

Free 3 needles of different specifications + push rod

138°C 183°C 227°C



Select High-quality Solder Paste



Easy to print



3 melting points



Plump solder joints



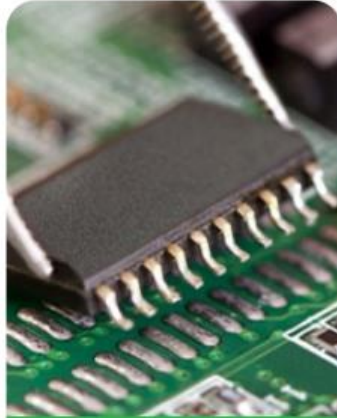
Less bonding solder joints

Wide Range Of Applications

Suitable for SMT patch, BGA soldering, LED patch, etc.



Phone Repair



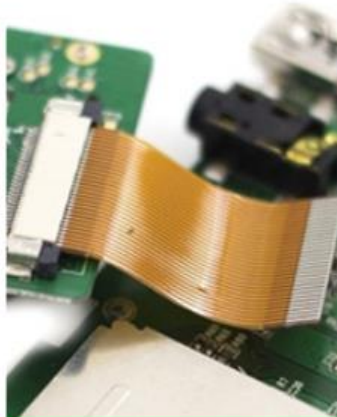
SMT patch



BGA tin planting



LED patch



Flex wire welding



Capacitance resistance

Suitable for sensors, wires, motors, fuses, connectors, metal shells, lighting, electronic components, SMT maintenance, BGA chip ball planting, SMT patches, etc.

Note!

The scope of application of different types of solder paste is different. If you are not sure which one is suitable for you, please consult online customer service first.

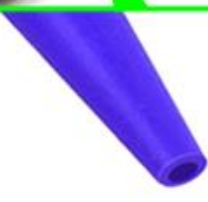
Syringe design Welding is not wasteful

Syringe type paste, welding is not wasteful, more precise,
and the sealing plug can be reused after use.

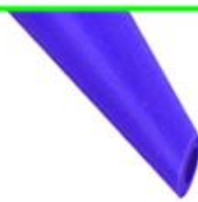
Gift Needle + Putter



Comes with a narrow mouth
Applicable precision solder



Cut into vulgarity
Suitable for large and meticulous tin



Cut to bevel
Used for different angles of work

Good thin consistency Dispense evenly

RELIFE's solder paste has moderate humidity, the solder paste is not easy to agglomerate, it is easy to be tinned, and there is no false soldering.



Fine and smooth paste



Moderate moisture



Ingenuity

Bright and plump solder joints

No false welding, less residue, bright solder joints

Strong tin climbing, good conductivity, oxidation resistance,
no corrosion to PCB, no cleaning



3 kinds of temperature

Multiple Melting Points Available

138°C | 183°C | 227°C



How to choose a variety of tin paste

138°C

Recommended when appropriate

Lead-free low temperature tin paste (Model: RL-404S)

Purpose: Suitable for IP12 Mini, which can meet SMT production of products with special welding requirements for temperature resistance.

183°C

Recommended for maintenance

Leaded medium temperature tin paste (Model: RL-403S)

Purpose: Suitable for the maintenance of basic PCB components, more commonly used.

227°C

Recommended when appropriate

Lead-free high temperature tin paste (Model: RL-406S)

Purpose: Suitable for IP12/12 Pro/12 Pro Max, used for double-sided glass fiber PCB with a certain SMT process or high temperature resistance.

Dear, this product is used by professional and technical personnel. If you don't know which tin paste is suitable for you, please consult the online customer service. Welcome to discuss technical exchanges.

PRODUCT PARAMETER

138°C Lead-free low temperature



MODEL	RL-404S	INGREDIENT	No. 4 powder
GRANULE	20-38(um)	NET WEIGHT	10CC

Applicable: Paper version that cannot withstand high temperature or other requirements for welding

Features: lead-free, low melting point, no tin, no displacement

183°C with lead medium temperature



MODEL	RL-403S	INGREDIENT	No. 4 powder
GRANULE	20-38(um)	NET WEIGHT	10CC

Application: dense pin IC, PCB welding with a variety of high-demand materials

Features: strong tin soldering, round and bright solder joints

227°C lead-free high temperature



MODEL	RL-406S	INGREDIENT	No. 4 powder
GRANULE	20-38(um)	NET WEIGHT	10CC

Application: high temperature resistant double-sided glass fiber PCB

Features: lead-free, no continuous tin, no vertical beer shift, full tin

STEPS FOR USAGE

The demonstration is only the method, please decide according to the actual situation



01 Turn counterclockwise to open the cap



02 Rotate clockwise and install the needle



03 Open the bottom cover
The white rubber plug in the syringe cannot be removed



04 Attach the push rod and you are ready to use