

**RELIFE**

—【RL-426A/B/C】—

# HIGH PURITY SOLDERING PASTE FLUX

Environmentally Friendly Soldering Paste Flux



Suitable for sensors, wires, motors, fuses, connectors, metal shells, lighting, electronic components, SMT maintenance, BGA chip tin planting, etc.



Less residue



No resistance



Less smoke



Environmentally friendly



No repair

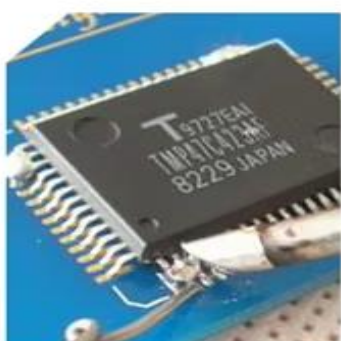


Non-conductive

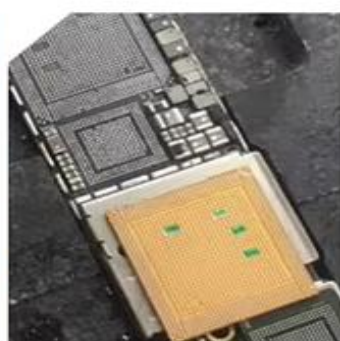
RELIFE RL-426

## Wide Applicability

Suitable for sensors, wires, SMT repairs, circuit welding, tablet phones, computer repairs, home appliance repairs, etc.



Maintenance drag welding



BGA tin planting



Maintenance desoldering



Component welding



Phone Repair



Mobile phone chip welding



LED lighting



Appliance repair

RELIFE RL-426

# Make The Welding Firm And Firm

Odorless, environmentally friendly materials, enhance solder fluidity, help solder wettability



RELIFE RL-426

# No Resistance Value Non-conductive

Remove the oxide film on the welding surface, easy to weld and prevent oxidation



# Product Information

Note: manual measurement will have ± tolerance, for reference only, please refer to the actual product

RELIFE



RL-426C

# Product Parameters

RELIFE

BRAND	RELIFE
PRODUCT NAME	Environmentally friendly soldering paste flux
MODEL	RL-426A/B/C
WEIGHT	≈ 30/40/80g
PRODUCT SIZE	RL-426A: 62.5*62.5*22mm
PRODUCT SIZE	RL-426B: 58*58*31.5mm
PRODUCT SIZE	RL-426C: 71*71*41.5mm