

**SS-905A V7.0**

Mobile phone repair dedicated power cable

# REPAIR THE POWER CABLE

IP6G-13 series+SAM series

Built-in original battery data  
one second boot

Transplant cells without battery boot



For IP 6G/6 Plus/6S/6S Plus/7G/7 Plus/8G/8 Plus/X/XS/XS Max/XR/11/11 Pro/11 Pro Max/  
SE2/12/12 Pro/12 Mini/12 Pro Max/13/13 Mini/13 Pro/13 Pro Max/SAM series



Precision manufacturing



Click and use



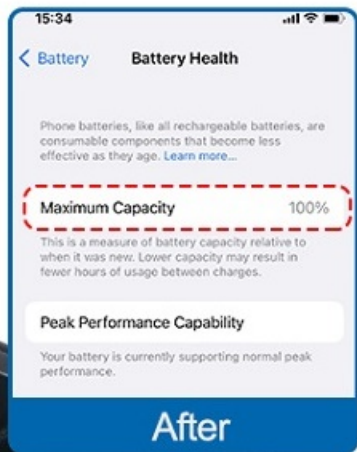
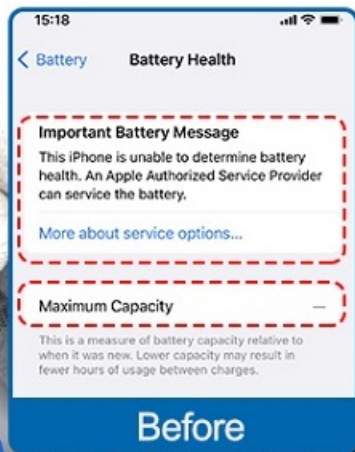
Small and portable



Quality accessories

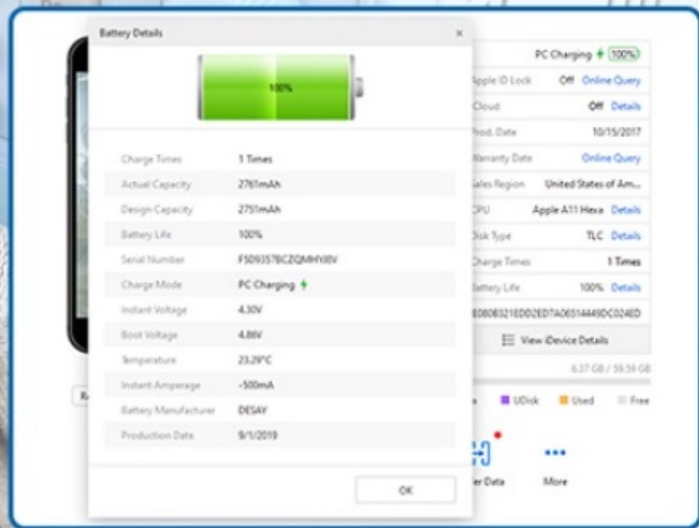
# Added Battery Boot Function

Built-in battery boot function, no need for battery boot when transplanting cells



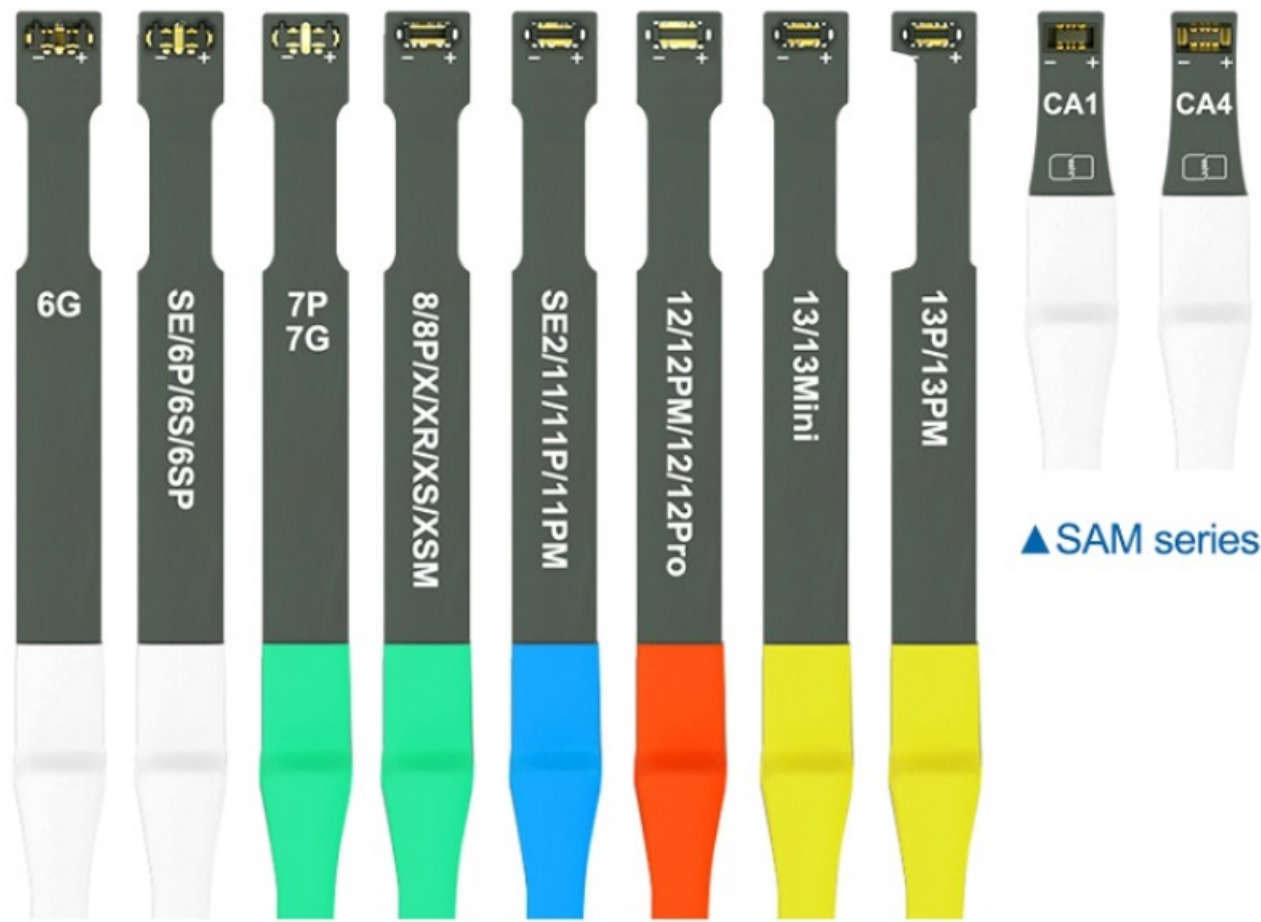
# Original Data 1S Boot

The built-in original battery data is turned on in one second, no need to wait



# IP6G~13 Series+SAM Series

Equipped with an identified battery contact holder, which is ready to use, can identify battery current/voltage/power, effectively solve the problem that the mobile phone cannot recognize the battery and restart and cannot be turned on, high integrated circuit, using smaller components, smaller battery detection board, More accurate battery buckle, easy to buckle, not easy to fall off

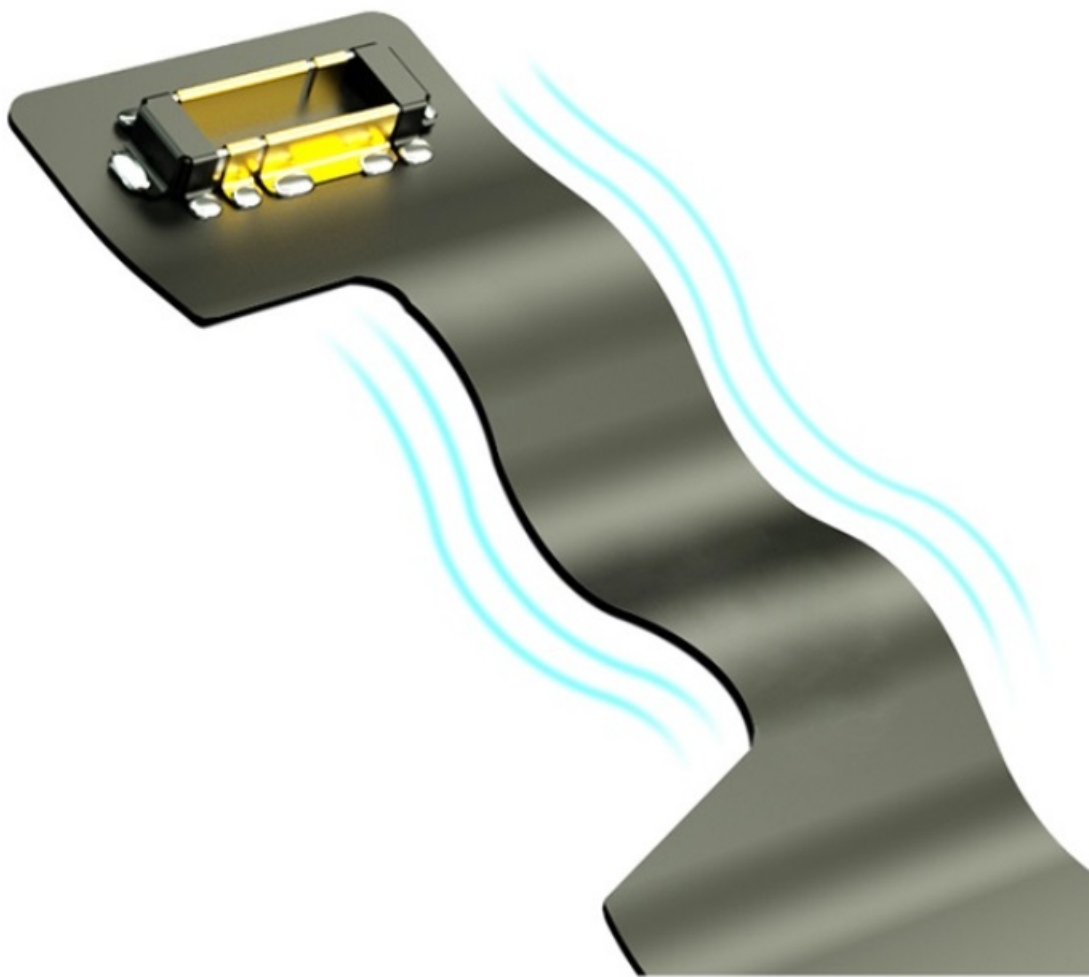




# Flexible Extended FPC Flexible Cable

---

The connection with the main board is not easy to fall off, and the number of folds is more than 90,000 times, and it is not easy to break. Ultra-soft and ultra-thin anti-folding FPC flexible row, durable and easy to operate



# Built-in Original IC Chip

Multi-level protection, intelligent anti-burn, self-identification

Reverse  
polarity protection

External  
regulated power  
supply



# PRODUCT INFORMATION

---

Note: Manual measurement will have  $\pm$  tolerance, for reference only,  
please refer to the actual product



Overall length: About 850mm

190mm





BRAND	SUNSHINE
PRODUCT NAME	Mobile phone repair dedicated power cable
MODEL	SS-905A V7.0
NET WEIGHT	About 105g
GROSS WEIGHT	About 135g
TOTAL LENGTH	About 130mm
PACKAGE SIZE	90*30*190mm

# PRODUCT DETAILS

---



## Banana Plug Design

---

Non-magnetic copper plug design, strong oxidation resistance, easy to use, suitable for all power sockets in the maintenance industry

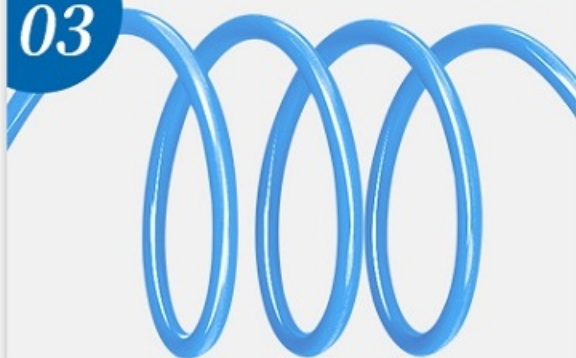
## Durable and innovative design

---

Introduce the concept of flexible row and special-shaped steel sheet design



03



### **PVC flexible wire**

Made of PVC plastic material,  
strong and resistant to pulling, not  
easy to knot, not easy to break

### **Hardened interface**

Protective rubber ring, so that the  
wire is not easy to break, stable  
and firm



05



## Click and use

Turn on the battery without injury, connect it to the motherboard of the mobile phone, and use it immediately. Warm reminder: Please check the positive and negative poles of the mobile phone carefully before use, and the voltage should not exceed 4.8V, so as not to burn the mobile phone

## Bold pure copper wire

Each set of wires is made of thick pure copper wire



06

07



## Power-on spring-triggered probe

The trigger probe can replace the tweezers to trigger the start-up, instead of the traditional way of using tweezers to start the machine, which is convenient and fast

## USB expansion interface

It is convenient for subsequent upgrade of the interface cable and the red and black power clips, which can pass 3A current, which solves the problem of excessive current when the ordinary power cable is tested and turned on, and automatic shutdown and power-off protection.



08