

ST-7500/ST-7800

ESD
SAFE

Preheater

Features

- Three sets of quick parameter design for quick temperature switching.
- Temperature locking function to prevent personnel from mistakenly adjusting the temperature.
- Sensor closed-loop PID control ensures precise and stable temperature.
- Available for preheating circuit boards and other processes that require uniform heating.

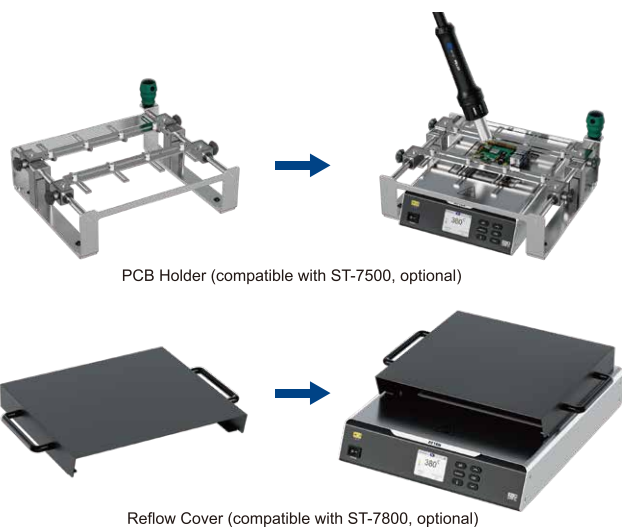
Specification

Model	ST-7500	ST-7800
Voltage	AC 230V \pm 10% 50Hz (110V \pm 10% 60Hz)	
Power	400W	800W
Temperature range	50~500°C	50~350°C
Heating area	120x120mm	200x180mm
Heating material	Infrared Ceramic	Aluminum Plate
External K-type thermocouple	Support (temperature measurement range 0~650°C)	
Communication function	Support (RS485 interface)	
Temperature Lock	Support	
Dimensions(Main Unit)	278(L)x203(W)x73(H)mm	355(L)x293(W)x73(H)mm
Weight(Main Unit)	\approx 2.4kg	\approx 5.1kg

Package List

Model	Package list		
ST-7500	Main unit x1	Grounding wire x1	Power cord x1
	K-type thermocouple test sensor x1		
ST-7800	User manual x1	Certificate x1	

Preheater Accessories



ST-7500

ST-7800

Temperature Measurement

After connecting the K-type thermocouple, the measured temperature data is displayed



Attention: The insertion of the positive and negative poles of the K-type thermocouple must correspond to the positive and negative poles of the machine panel



Connected via RS485 serial port



Online Function

Preheating Section Setting Temperature

ST-7800 Heating Reflow Profile

