



# ST13005 STB13005-1

## HIGH VOLTAGE FAST-SWITCHING NPN POWER TRANSISTORS

- MEDIUM VOLTAGE CAPABILITY
- NPN TRANSISTORS
- LOW SPREAD OF DYNAMIC PARAMETERS
- MINIMUM LOT-TO-LOT SPREAD FOR RELIABLE OPERATION
- VERY HIGH SWITCHING SPEED
- THROUGH-HOLE I2PAK (TO-262) POWER PACKAGE IN TUBE (SUFFIX "-1")

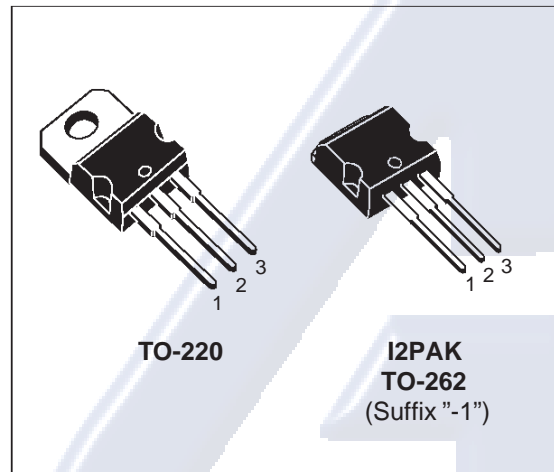
### APPLICATIONS:

- ELECTRONIC BALLASTS FOR FLUORESCENT LIGHTING
- SWITCH MODE POWER SUPPLIES

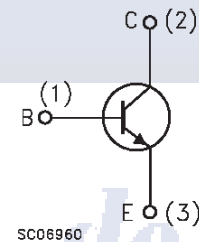
### DESCRIPTION

The devices are is manufactured using high voltage Multi Epitaxial Planar technology for high switching speeds and medium voltage capability.

They use a Cellular Emitter structure with planar edge termination to enhance switching speeds while maintaining the wide RBSOA.



### INTERNAL SCHEMATIC DIAGRAM



### ABSOLUTE MAXIMUM RATINGS

Symbol	Parameter	Value	Unit
$V_{CES}$	Collector-Emitter Voltage ( $V_{BE} = 0$ )	700	V
$V_{CEO}$	Collector-Emitter Voltage ( $I_B = 0$ )	400	V
$V_{EBO}$	Emitter-Base Voltage ( $I_C = 0$ )	9	V
$I_C$	Collector Current	4	A
$I_{CM}$	Collector Peak Current ( $t_p < 5$ ms)	8	A
$I_B$	Base Current	2	A
$I_{BM}$	Base Peak Current ( $t_p < 5$ ms)	4	A
$P_{tot}$	Total Dissipation at $T_c = 25$ °C	75	W
$T_{stg}$	Storage Temperature	-65 to 150	°C
$T_j$	Max. Operating Junction Temperature	150	°C

**ST13005 / STB13005-1****THERMAL DATA**

$R_{thj-case}$	Thermal Resistance Junction-case	Max	1.67	°C/W
----------------	----------------------------------	-----	------	------

**ELECTRICAL CHARACTERISTICS** ( $T_{case} = 25^{\circ}C$  unless otherwise specified)

Symbol	Parameter	Test Conditions	Min.	Typ.	Max.	Unit	
$I_{CEV}$	Collector Cut-off Current ( $V_{BE} = -1.5V$ )	$V_{CE} = 700V$ $V_{CE} = 700V$ $T_{case} = 100^{\circ}C$			1 5	mA mA	
$I_{EBO}$	Emitter Cut-off Current ( $I_C = 0$ )	$V_{EB} = 9V$			1	mA	
$V_{CE(sus)*}$	Collector-Emitter Sustaining Voltage ( $I_B = 0$ )	$I_C = 10mA$	400			V	
$V_{CE(sat)*}$	Collector-Emitter Saturation Voltage	$I_C = 1A$ $I_C = 2A$ $I_C = 4A$		$I_B = 0.2A$ $I_B = 0.5A$ $I_B = 1A$	0.5 0.6 1	V V V	
$V_{BE(sat)*}$	Base-Emitter Saturation Voltage	$I_C = 1A$ $I_C = 2A$		$I_B = 0.2A$ $I_B = 0.5A$	1.2 1.6	V V	
$h_{FE}$	DC Current Gain	$I_C = 1A$ Group A Group B $I_C = 2A$		$V_{CE} = 5V$  $V_{CE} = 5V$	15 27 8	32 45 40	
$t_s$ $t_f$	RESISTIVE LOAD Storage Time Fall Time	$I_C = 2A$ $I_{B1} = -I_{B2} = 0.4A$ $V_{CC} = 125V$	1.5	0.2	3.0	$\mu s$ $\mu s$	

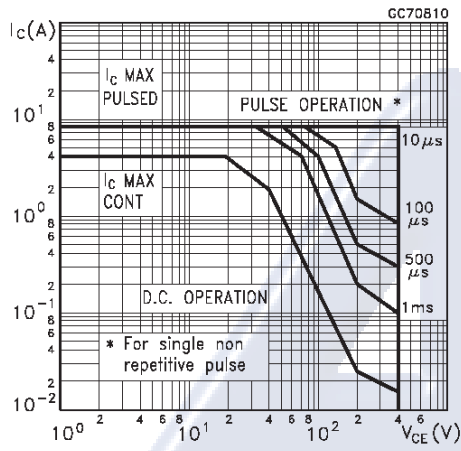
\* Pulsed: Pulse duration = 300 $\mu s$ , duty cycle = 1.5 %

Note : Product is pre-selected in DC current gain (GROUP A and GROUP B). STMicroelectronics reserves the right to ship either groups according to production availability. Please contact your nearest STMicroelectronics sales office for delivery details.

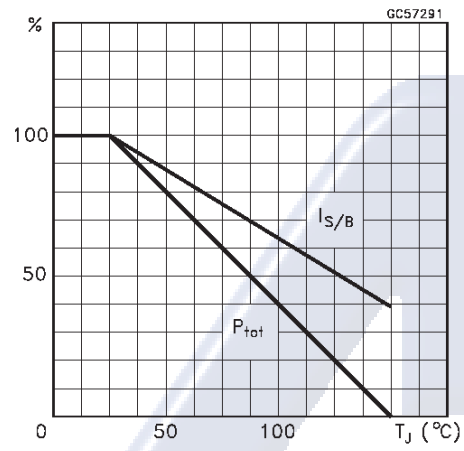
*Electrónica S.A. de C.V.*

ST13005 / STB13005-1

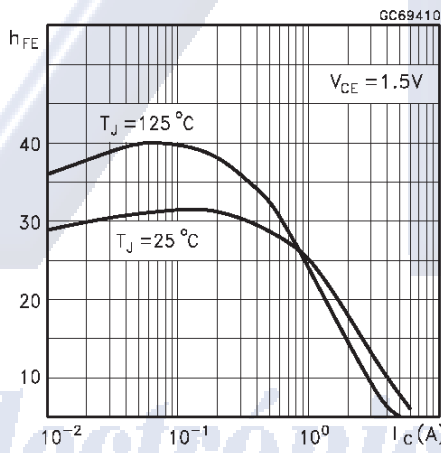
Safe Operating Areas



Derating Curve

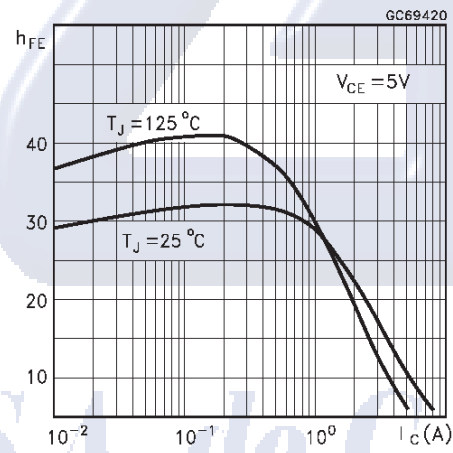


DC Current Gain

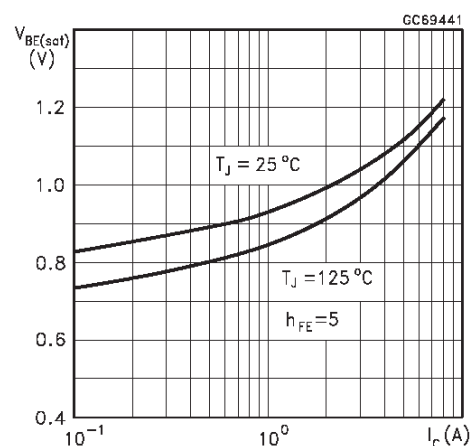
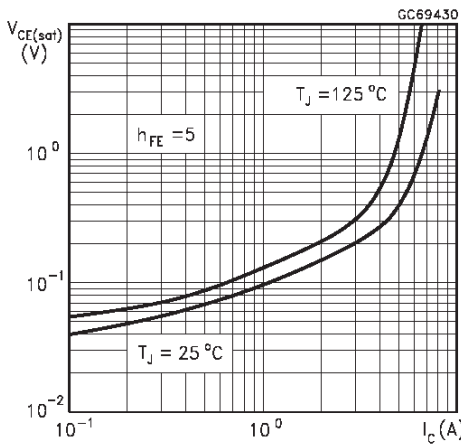


Collector Emitter Saturation Voltage

DC Current Gain

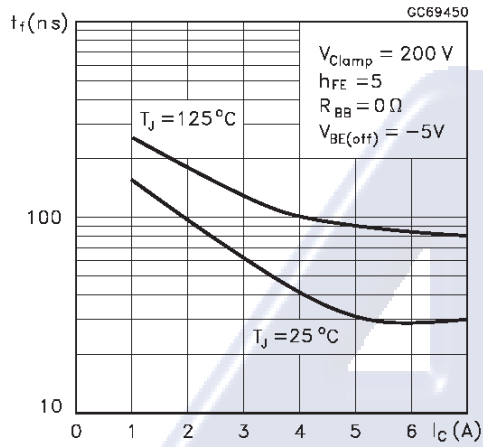


Base Emitter Saturation Voltage

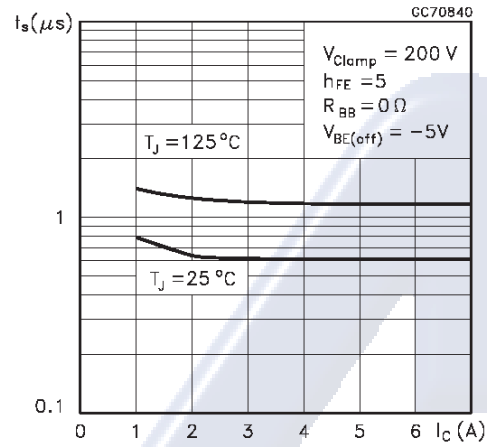


ST13005 / STB13005-1

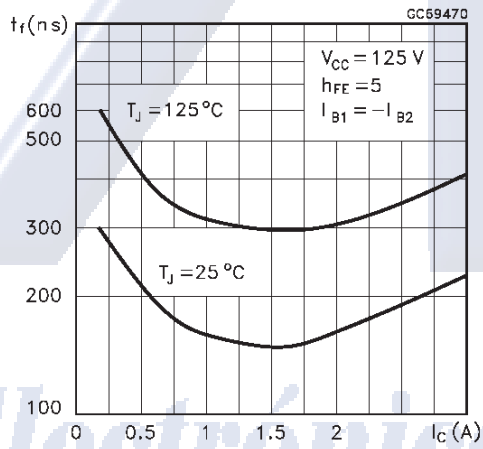
Inductive Fall Time



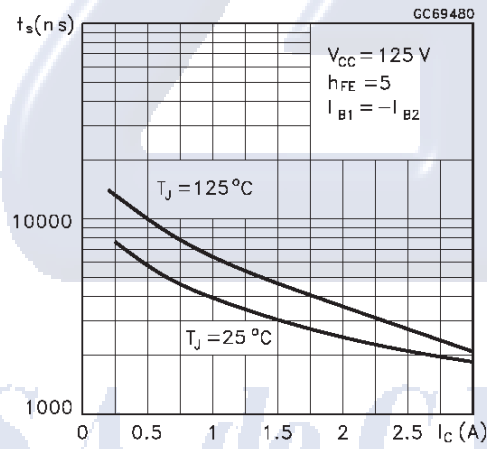
Inductive Storage Time



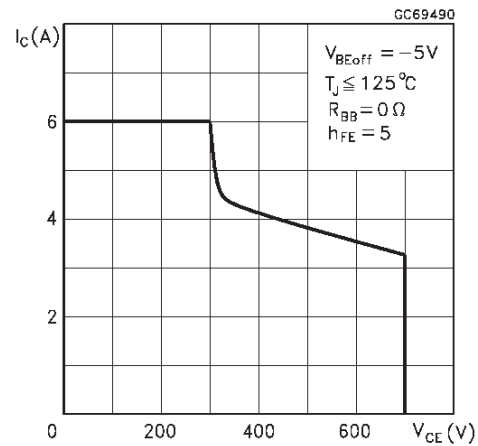
Resistive Fall Time



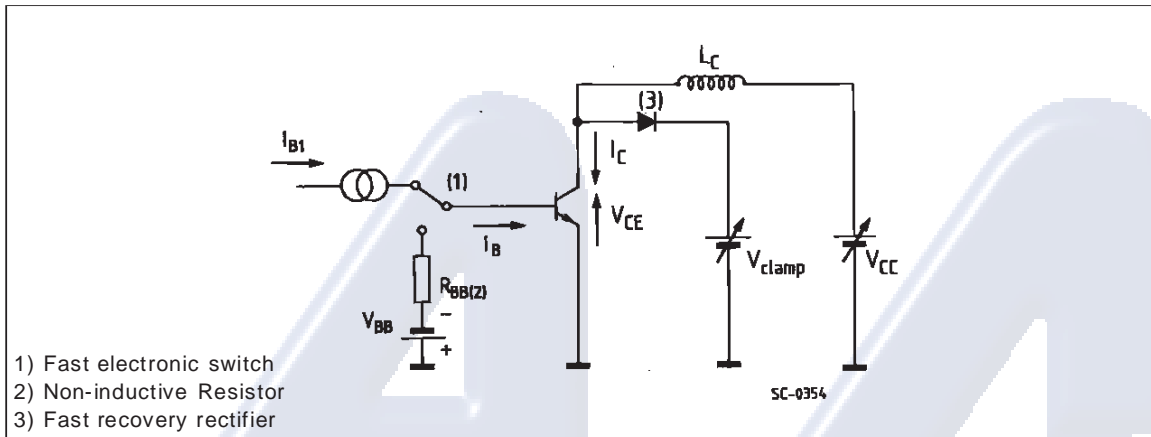
Resistive Load Storage Time



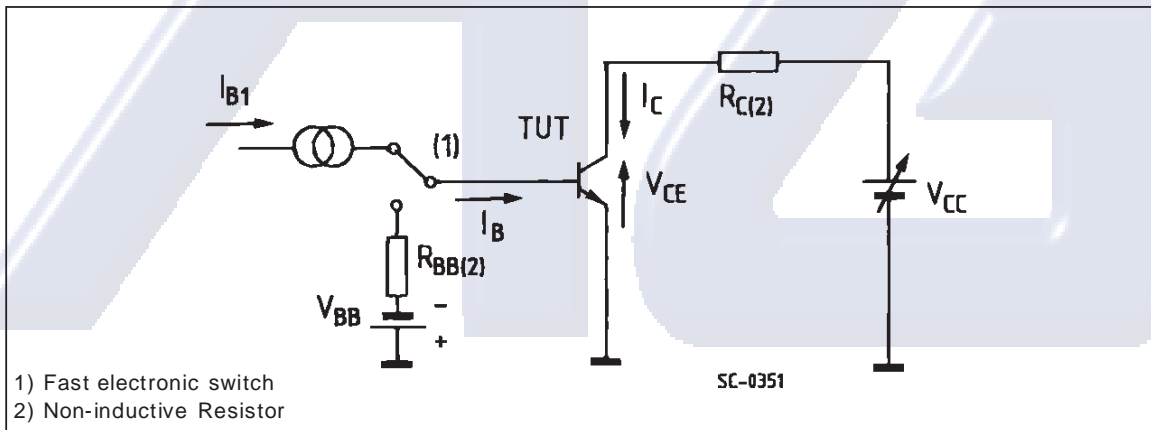
Reverse Biased SOA



**Figure 1:** Inductive Load Switching Test Circuit.



**Figure 2:** Resistive Load Switching Test Circuit.

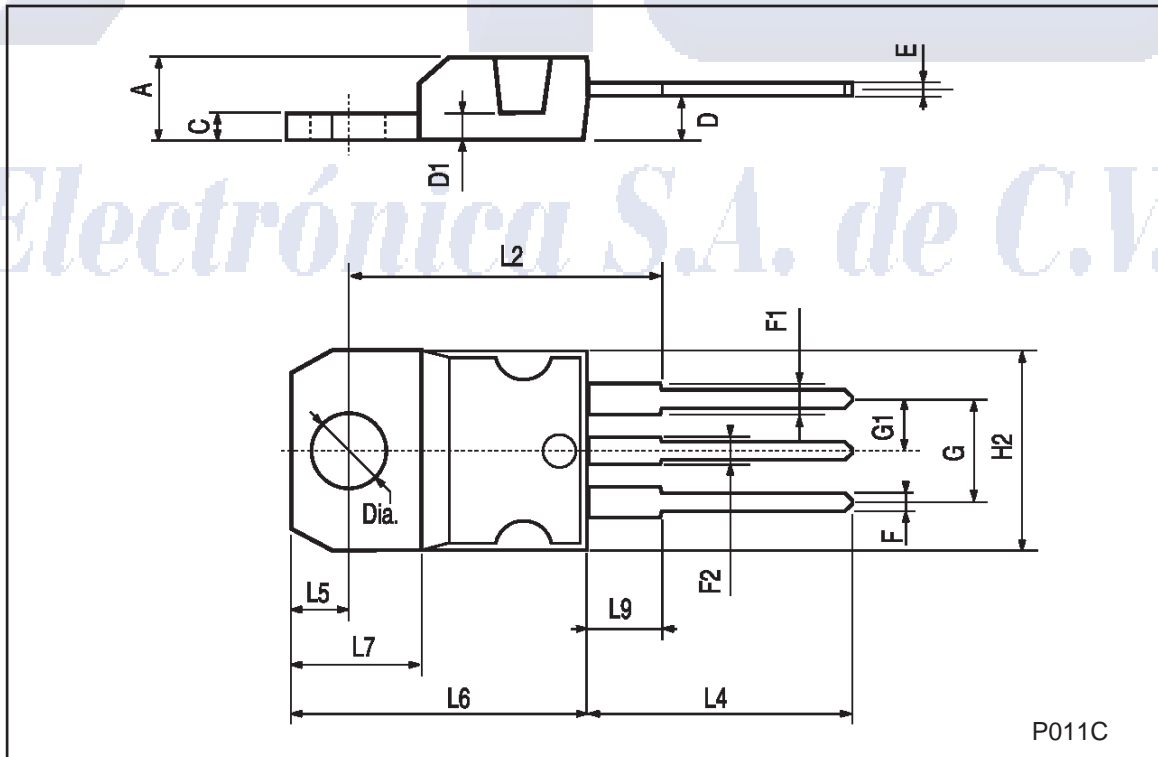


*Electrónica S.A. de C.V.*

ST13005 / STB13005-1

TO-220 MECHANICAL DATA

DIM.	mm			inch		
	MIN.	TYP.	MAX.	MIN.	TYP.	MAX.
A	4.40		4.60	0.173		0.181
C	1.23		1.32	0.048		0.051
D	2.40		2.72	0.094		0.107
D1		1.27			0.050	
E	0.49		0.70	0.019		0.027
F	0.61		0.88	0.024		0.034
F1	1.14		1.70	0.044		0.067
F2	1.14		1.70	0.044		0.067
G	4.95		5.15	0.194		0.203
G1	2.4		2.7	0.094		0.106
H2	10.0		10.40	0.393		0.409
L2		16.4			0.645	
L4	13.0		14.0	0.511		0.551
L5	2.65		2.95	0.104		0.116
L6	15.25		15.75	0.600		0.620
L7	6.2		6.6	0.244		0.260
L9	3.5		3.93	0.137		0.154
DIA.	3.75		3.85	0.147		0.151



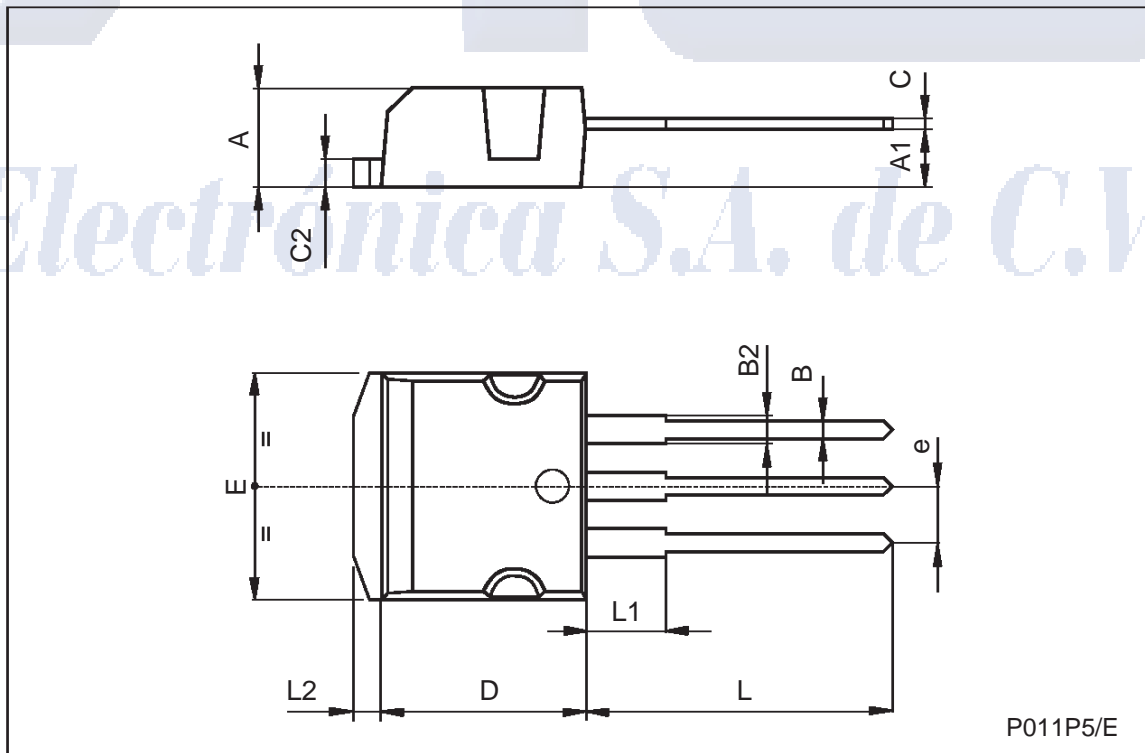
P011C



ST13005 / STB13005-1

TO-262 (I<sup>2</sup>PAK) MECHANICAL DATA

DIM.	mm			inch		
	MIN.	TYP.	MAX.	MIN.	TYP.	MAX.
A	4.4		4.6	0.173		0.181
A1	2.49		2.69	0.098		0.106
B	0.7		0.93	0.027		0.036
B2	1.14		1.7	0.044		0.067
C	0.45		0.6	0.017		0.023
C2	1.23		1.36	0.048		0.053
D	8.95		9.35	0.352		0.368
e	2.4		2.7	0.094		0.106
E	10		10.4	0.393		0.409
L	13.1		13.6	0.515		0.531
L1	3.48		3.78	0.137		0.149
L2	1.27		1.4	0.050		0.055



ST13005 / STB13005-1

---

**AG**

*Electrónica S.A. de C.V.*

Information furnished is believed to be accurate and reliable. However, STMicroelectronics assumes no responsibility for the consequences of use of such information nor for any infringement of patents or other rights of third parties which may result from its use. No license is granted by implication or otherwise under any patent or patent rights of STMicroelectronics. Specification mentioned in this publication are subject to change without notice. This publication supersedes and replaces all information previously supplied. STMicroelectronics products are not authorized for use as critical components in life support devices or systems without express written approval of STMicroelectronics.

The ST logo is a registered trademark of STMicroelectronics

© 1998 STMicroelectronics – Printed in Italy – All Rights Reserved

STMicroelectronics GROUP OF COMPANIES

Australia - Brazil - Canada - China - France - Germany - Italy - Japan - Korea - Malaysia - Malta - Mexico - Morocco - The Netherlands - Singapore - Spain - Sweden - Switzerland - Taiwan - Thailand - United Kingdom - U.S.A.

<http://www.st.com>