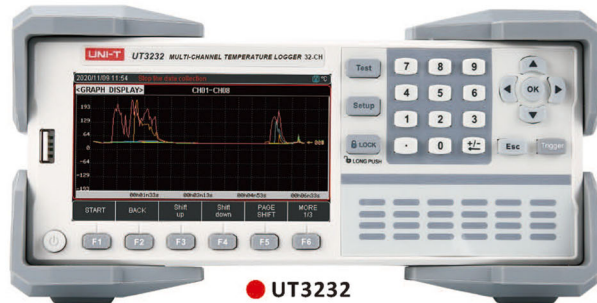


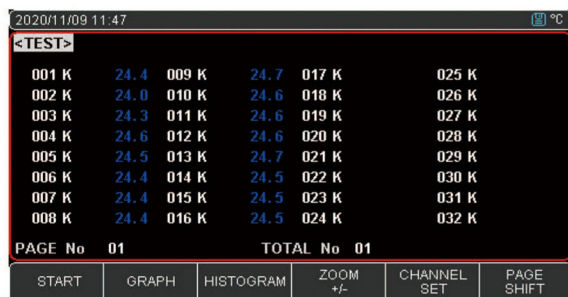
UT3200 Series

Multi-channel Temperature Loggers

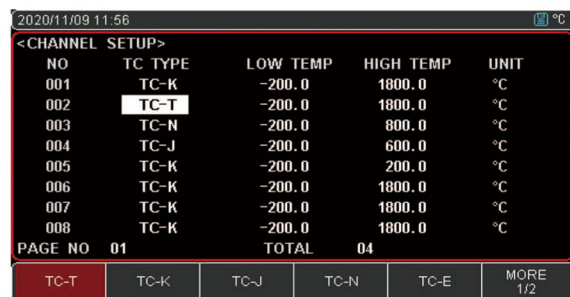


The UT3200 Series Multi-channel Temperature Loggers contain 4 models: UT3208, UT3216, UT3224 and UT3232, which corresponds with thermocouple testing channels of 8, 16, 24 and 32. With 4.3-inch LCD screen, this Series is compatible with multiple temperature sensors, can collect multichannel temperature data simultaneously. The UT3200 Series has advantages of upper/lower limit alarm, fast respond, stable data transmission and thermocouple short-circuit detection.

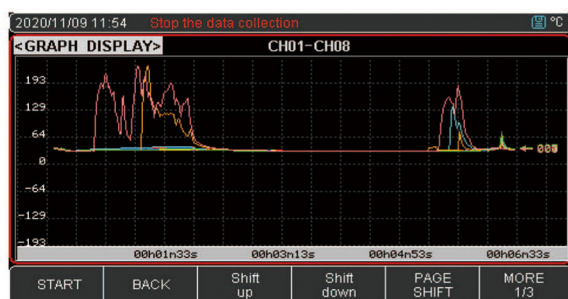
- 4.3-inches LCD screen
- Thermocouple short-circuit automatic detection
- Upper/lower temperature limit alarm setable for each channel
- Specified channel scanning
- Standard RS-232C and USB Device interface, SCPI protocol is supported
- Visual numerical reading, bar chart and curvilinear graph
- Standard USB Host interface, 8G U-disk, USB data storage is supported



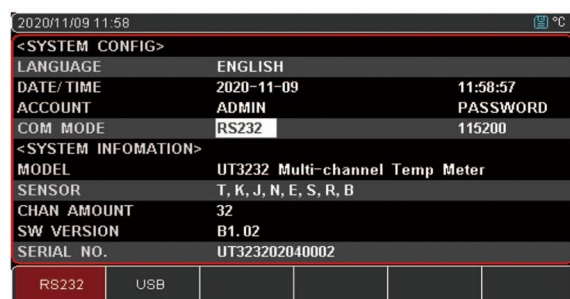
- 32 test channels, 4.3 inches LCD display



- It has a wide range of adaptability and supports K/N/E/I/T/R/S/B thermocouples



- Visual numerical reading, bar chart and curvilinear graph



- File management, Standard RS-232C and USB Device interface, SCPI protocol is supported

Technical Specifications	UT3208	UT3216	UT3224	UT3232
Display mode	Visual numerical reading, bar chart and curvilinear graph			
Index No.	Thermocouple: J,K,T,E,S,N,B,R			
Measuring range	-200.0°C~1800.0°C (varies with different thermocouple)			
Resolution	0.1°C			
Number of channel	8	16	24	32
Scanning speed	Fast, slow			
Sorting function	Build-in data sorting, can set upper/lower temperature limit alarm for each channel			
Alarm function	Upper/lower temperature limit alarm			
User calibration	User calibration of each channel is allowed			
Button functions	Lock -keyboard lock, Print Sc-screenshot			
System setup	Language: Chinese/English, key tone setting			
Storage	FAT storage function (supports USB disk storage, mobile hard disk drive is not supported)			
Interface & protocol	RS-232 and USB communication interface, SCPI protocol			
Upper computer software	√			
Display mode	Test temperature range			Accuracy
T-type Thermocouple	-150°C-0°C, 0°C-400°C			±1.0°C, ±0.8°C
K-type Thermocouple	-100°C-0°C, 0°C-1350°C			±1.2°C, ±0.8°C
J-type Thermocouple	-100°C-0°C, 0°C-1200°C			±1.0°C, ±0.7°C
N-type Thermocouple	-100°C-0°C, 0°C-1300°C			±1.5°C, ±0.9°C
E-type Thermocouple	-100°C-0°C, 0°C-850°C			±0.9°C, ±0.7°C
S-type Thermocouple	-100°C-0°C, 100°C-300°C, 300°C-1750°C			±4.5°C, ±3.0°C, ±2.2°C
R-type Thermocouple	0°C-100°C, 100°C-300°C, 300°C-1750°C			±4.5°C, ±3.0°C, ±2.2°C
B-type Thermocouple	600°C-800°C, 800°C-1000°C, 1000°C-1800°C			±5.5°C, ±3.8°C, ±2.5°C
Power	AC 100~240V 50/60Hz			
Display	4.3-inch LCD screen			
Product net weight	3.5kg			
Product size (W×H×D)	340mm X 214mm X 89mm			
Standard quantity per carton	2pcs			
Standard carton size	400mm X 340mm X 185mm			
Standard carton gross weight	9kg			

Ordering Information	
UT3200 Series	UT3232: multichannel thermometers(32 channels)
	UT3224: multichannel thermometers(24 channels)
	UT3216: multichannel thermometers (16 channels)
	UT3208: multichannel thermometers(8 channels)
Standard Accessories	Power cord conforming to the standard of the destination country
	USB interface cable x1
	8G U-disk x1
	Channel identifier x1
	{UT3208/16/24/32 correspond to 1/2/3/4 set of test lead}
	K-type test lead temperature range: -100~200°C
Optional Accessories	UT-T21M: K-type thermocouple test lead module
	Thermocouple sensor: T,J,Z,N,S,E,B,R,and many more

Para mayor información puede consultar el manual de usuario dando clic en el siguiente enlace:

<http://unitrend.oss-cn-hongkong.aliyuncs.com/upload/file/20210530/UT3200%20Series%20Benchtop%20Thermometer%20User%20Manual.pdf>