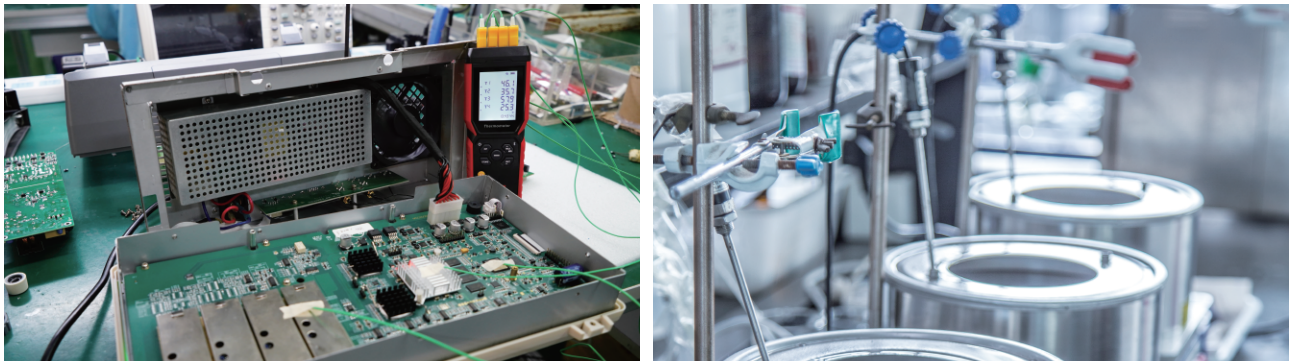


Technical Specifications

Model	UT325F	
Thermocouple types	Type K, J, T, E, R, S and N	
Measuring range	Type K thermocouple	-200.0°C~1372°C (-328.0°F~2501°F)
	Type J thermocouple	-210.0°C~1200°C (-346.0°F~2192°F)
	Type T thermocouple	-250.0°C~400.0°C (-418.0°F~752.0°F)
	Type E thermocouple	-150.0°C~1000°C (-238.0°F~1832°F)
	Type R thermocouple	0°C~1767°C (32°F~3212°F)
	Type S thermocouple	0°C~1767°C (32°F~3212°F)
	Type N thermocouple	-200.0°C~1300°C (-328.0°F~2372°F)
Display resolution	0.1°C/°F/K (<1000)	
	1.0°C/°F/K (≥1000)	
Accuracy	±(0.2%+0.5°C)	Below -10°C: The original basis + 0.5°C; Below -200°C: The original basis + 2°C; Type T below -200°C: For reference only
	±(0.2%+0.9°F)	
	The accuracy is applicable to the ambient temperature of 18°C to 28°C, and it does not include the error of the thermocouple	
Interval between 1s~24h	Unit selection	°C/°F/K
	Data hold	✓
	Auto power off	✓
	Measurement modes	MIN/MAX/AVG
	Difference	View temperature difference between any two channels
	Timing measurement	✓
	Data recording	72000 groups
System functions	Backlight	Turn on/off
	Data transmission	Type-C USB, Bluetooth
	Battery status	✓
Power frequency anti-interference	50/60Hz	
Drop proof	1m	
Battery type	3 x AAA alkaline zinc-manganese battery	
Operating time	>30h	
Operating temperature	-10°C~50°C (14°F~122°F)	
Storage temperature	20°C~60.0°C (-4°F~140°F)	
Operating humidity	90%RH (non-condensing)	



UNI-TREND
TECHNOLOGY



Q meters.uni-trend.com



UNI-T®



UT325F
4-Channel Thermometer

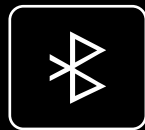
The thermometer is a high- accuracy digital thermometer that uses a thermocouple as the temperature probe and comes with 4 channels. It is widely used in laboratory, electronic engineering, hardware processing and other fields.



4-Channel



PC software



Bluetooth
APP



Data storage



Temperature
difference



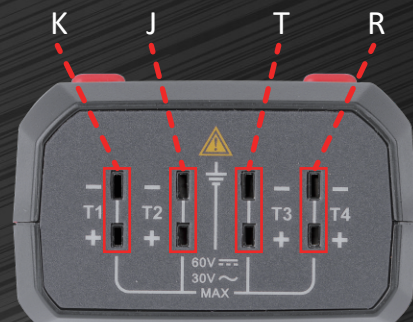
Multiple
modes

4-channel temperature measurement supported.

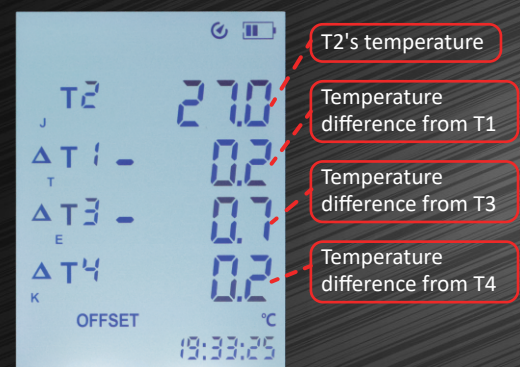


Channels are compatible with 7 types of thermocouples (J, K, T, E, R, S, N).

The thermocouple type of each channel can be set separately.

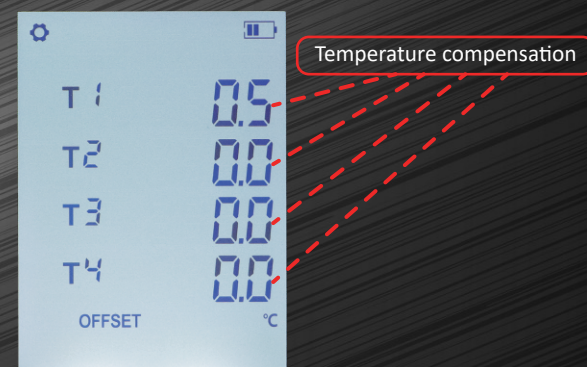


Temperature difference of each channel displayed.



Offset value compensation

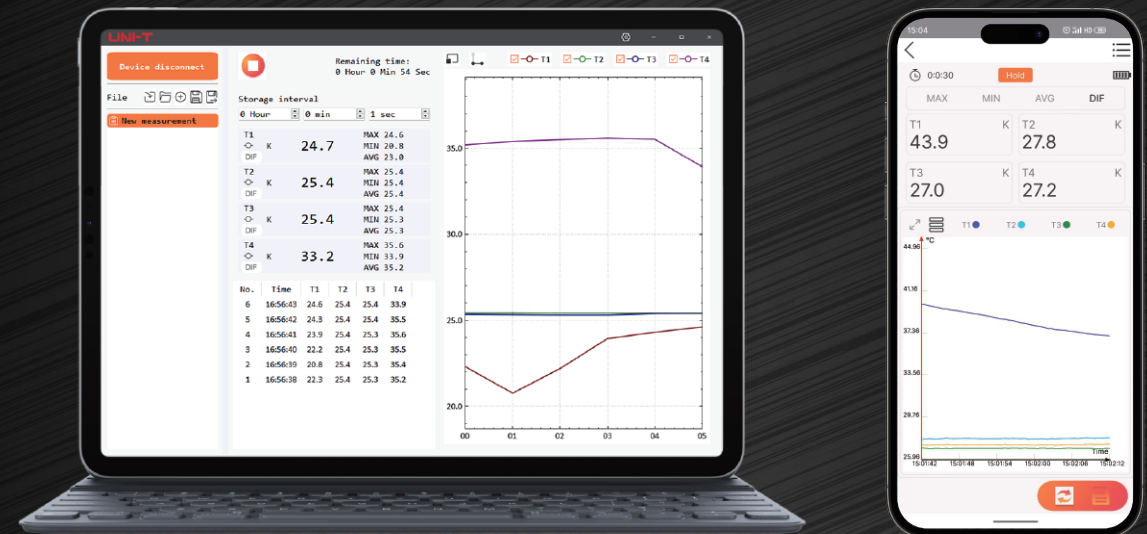
Temperature difference of one thermocouple can be compensated by adjusting thermometer's reading



1m drop proof, more robust and durable



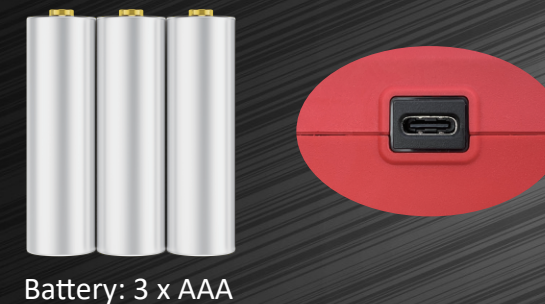
Connect PC software with Type-C, and phone APP connection through Bluetooth



Control device or transmit data

Dual power supply mode

USB charge is supported to satisfy a long-time measurement.



Backlit LCD display



72000 groups of data storage

Storage interval is adjustable (0s~24h)

