



DIGI XBEE TO IP
GATEWAY WITH CLOUD
MANAGEMENT SERVICES



DIGI XBEE GATEWAY FAMILY

Programmable gateway connects Digi XBee devices to cloud-based applications over cellular, Wi-Fi or Ethernet

The Digi XBee® Gateway provides a low-cost Digi XBee to IP solution, featuring scalable remote configuration and management of Digi XBee networks with Digi Remote Manager®. By default, all Digi XBee data sent to the gateway is automatically available to online applications via Digi Remote Manager. With a simple, open-source Python development environment, this gateway also enables custom applications to run locally while interfacing across existing Ethernet/Wi-Fi/cellular networks for WAN connectivity to cloud-based software applications.

Digi XBee Gateway products can be managed remotely via Digi Remote Manager, allowing users to remotely manage thousands of deployed devices, supporting features like remote firmware upgrades and event alarms.

The Digi XBee Gateway can be tested and developed using the Digi XBee ZigBee Cloud Kit, which fully integrates the Digi XBee Gateway, Digi XBee Module, Digi Remote Manager and a sample web application into a cohesive internet-connected solution. This kit is a powerful tool that enables developers to create internet-connected prototypes in 30 minutes or less.

BENEFITS

- Open Source Python environment for custom application development on the gateway
- Out-of-box integration with Digi Remote Manager enables remote connectivity, configuration and management of Digi XBee networks
- Secure, scalable access to an unlimited number of remote Digi XBee-based devices
- Cellular, Wi-Fi and Ethernet WAN options for flexible broadband connectivity

RELATED PRODUCTS



Modules



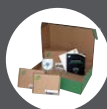
Adapters



Sensors

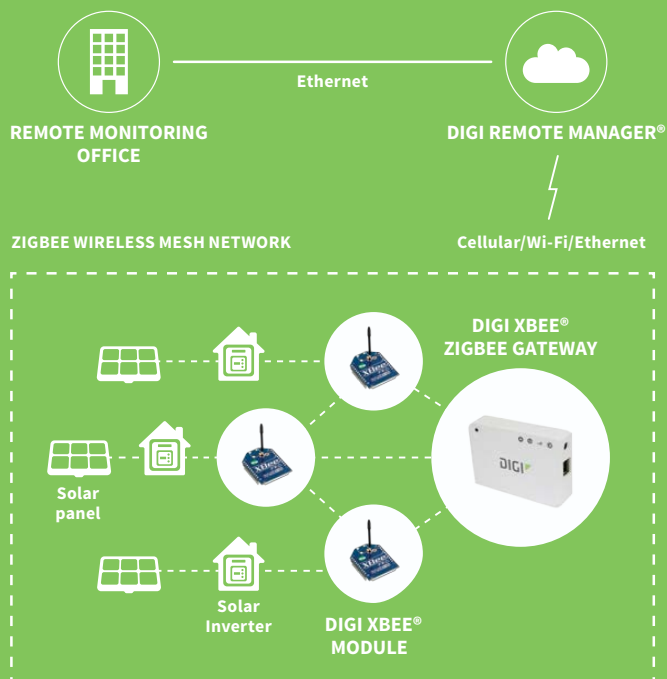


Range
Extenders



Development
Kits

APPLICATION EXAMPLE



DIGI REMOTE MANAGER

CONNECTING ANY APPLICATION TO ANYTHING, ANYWHERE
YOUR BRAND, YOUR FIRMWARE AND CONFIGURATION

Digi Remote Manager is a public, platform-as-a-service (PaaS) that allows organizations to redefine the way they run their business and transform their customers' experience through remote management of assets and development of solutions to reduce costs and drive efficiencies.

Digi Remote Manager enables organizations to connect any device, sensor or machine, located anywhere in the world, to the internet and doing so provides new insights to drive those business efficiencies.

Businesses can gain new intelligence through data visualization, increase efficiency of operations by managing devices en masse, and keep their data safe in the cloud with the Digi Remote Manager platform.

BENEFITS

- Out-of-the-box compatibility with Digi hardware
- Easy application integration and open APIs
- No costly infrastructure to operate or maintain
- Multi-tenant, cloud-based architecture
- Manage devices en masse
- Two-way device to cloud communication
- Asynchronous event updates and alerts
- Reliable, scalable and secure
- Broadcast network grade service ability - operating 99.9% or greater
- Dedicated Security Office

PRIVATE LABELING

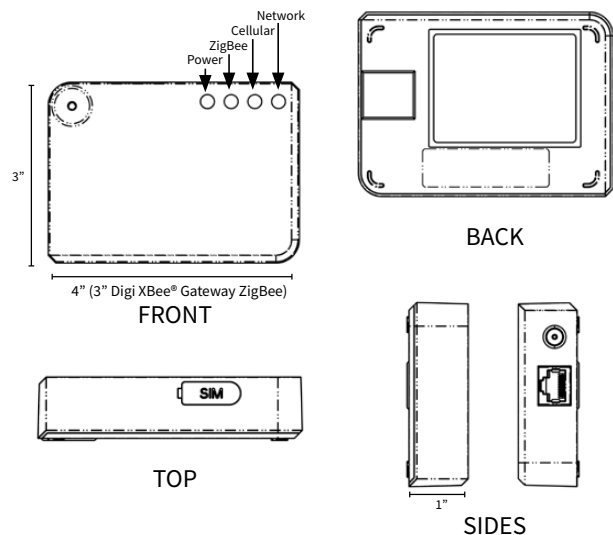
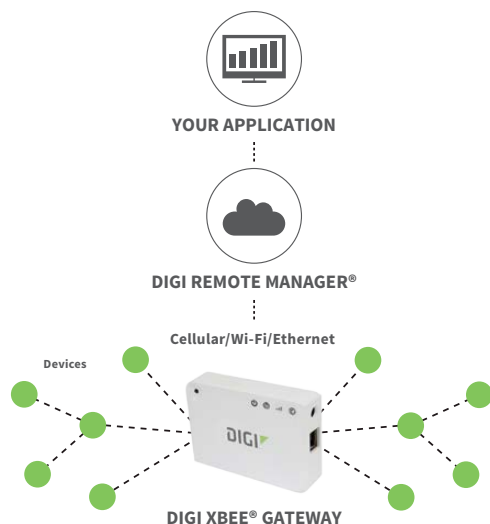
YOUR BRAND, YOUR FIRMWARE AND CONFIGURATION

Digi knows that a gateway is only one part of our customers' complex market offering. We are therefore pleased to offer a simple private branding process as a value-add to the Digi XBee Gateway product family.

For a fixed initial charge and a minimum order commitment, Digi customers get a custom part number with their brand, fixed (or "frozen") firmware, and custom default configuration.

BENEFITS

- Place your brand on the enclosure
- Pre-load your specific firmware and configuration
- All for a fixed price



SPECIFICATIONS		Digi XBee® Gateway		Digi XBee® Gateway - Cellular	
GENERAL					
MANAGEMENT		Secure enterprise management via Digi Remote Manager			
PROTOCOLS		UDP/TCP, DHCP			
LEDS		Power, Network (LAN/WAN), ZigBee (HAN/PAN)		Power, Network (LAN/WAN), ZigBee (HAN/PAN), Cellular signal strength	
SECURITY		SSL tunnels, WEP-40, WEP-104, WPA/WPA2, Authentication with PSK and EAP		SSL tunnels, Cellular network security	
DIMENSIONS (L X W X H)		3 in x 3 in x 1 in (7.62 cm x 7.62 cm x 2.54 cm)		3 in x 4 in x 1 in (7.62 cm x 10.16 cm x 2.54 cm)	
DEVELOPMENT					
PYTHON VERSION		2.7.1			
OPERATING SYSTEM		Digi Embedded Linux			
DIGI XBEE GATEWAY APPLICATION		Digi XBee data sent to the gateway is automatically available to online applications via Digi Remote Manager			
PROCESSOR AND MEMORY (VARIES BY FIRMWARE AND OS VERSION)		Freescale i.MX28, 20 MB RAM, 10 MB file space			
ZIGBEE					
ZIGBEE STACK		ZigBee PRO Feature Set, Ember EM357			
ZIGBEE MODULE		Digi XBee® ZB SMT (S2C)			
TRANSMIT POWER/RECEIVE SENSITIVITY		Worldwide version: Digi XBee ZB SMT transmit power 6.3 mW (+8 dBm); Receiver sensitivity (1% PER) -102 dBm; North American version: Digi XBee-PRO® ZB SMT transmit power: 63 mW (+18 dBm); Receiver sensitivity (1% PER) -102 dBmP			
CELLULAR					
CELLULAR MODULE		N/A		Telit 910 Series	
GSM BANDS		N/A		800/850/900/AWS/1900/2100 MHz 3G/UMTS	
CDMA BANDS		N/A		800/1900 MHz 1x RTT	
WI-FI					
802.11		b/g/n		N/A	
DATA RATE		Up to 72.2 Mbps		N/A	
TRANSMIT POWER		18 dBm typical (varies by mode, channel and region)		N/A	
RECEIVER SENSITIVITY		Up to -87 dBm @ 11 Mbps		N/A	
MODES		AP Client Modes only; Access Point Mode not supported		N/A	
ETHERNET					
PORTS		1 RJ-45 port			
PHYSICAL LAYER		10/100Base-T			
ROUTING		Ethernet port designed for configuration and WAN backhaul			
POWER REQUIREMENTS					
POWER SUPPLY		5 VDC power supply with barrel connector included			
POWER CONSUMPTION		Typical: 1.2 W, Max: 2.5 W		Typical: 3.5 W, Max: 15 W	
ENVIRONMENTAL					
OPERATING TEMPERATURE		0° C to 40° C (32° F to 104° F)			
RELATIVE HUMIDITY		5% to 95% (non-condensing)			
REGULATORY APPROVALS					
MOBILE CERTIFICATIONS (GSM)		N/A		AT&T	
MOBILE CERTIFICATIONS (CDMA)		N/A		Verizon and Sprint	
SAFETY		UL 60950-1, CSA C22.2 and EN 60950-1			
EMISSIONS/IMMUNITY/TRANSMITTER		CE, FCC Part 15 (Class B), IC, ETSI			
WARRANTY					
PRODUCT WARRANTY		3 years + Digi Foundations*			

*Digi Foundations can extend the standard three-year warranty to a Limited Lifetime Warranty that provides replacement with a new or similar Digi product for a period of five years from the data of purchase. After five years from the purchase date, the warranty value will revert to a 40 percent credit towards the MSRP of an equivalent product from Digi.

PART NUMBERS	DESCRIPTION
XKA2C-Z7T-U	Digi XBee ZigBee Cloud Kit
XKA2C-Z7T-W	Digi XBee ZigBee Cloud Kit (International)
X2E-Z3C-E1-A	Digi XBee Gateway - ZigBee to Ethernet
X2E-Z3C-E1-W	Digi XBee Gateway - ZigBee to Ethernet (International)
X2E-Z3C-W1-A	Digi XBee Gateway - ZigBee to Ethernet/Wi-Fi
X2E-Z3C-W1-W	Digi XBee Gateway - ZigBee to Ethernet/Wi-Fi (International)
X2E-Z3C-H2-W	Digi XBee Gateway - ZigBee to GSM 3G (International)
X2E-Z4C-D2-A	Digi XBee Gateway - ZigBee to Verizon 3G
X2E-Z4C-H1-A	Digi XBee Gateway - ZigBee to GSM 3G (AT&T)

PART NUMBERS	DIGI FOUNDATIONS ADD-ONS
DGF-BDL-PREM-1YR	Digi Foundations add-on bundle 1 year
DGF-BDL-PREM-3YR	Digi Foundations add-on bundle 3 years
DGF-BDL-PREM-5YR	Digi Foundations add-on bundle 5 years

FOR MORE INFORMATION
PLEASE VISIT WWW.DIGI.COM

DIGI SERVICE AND SUPPORT / You can purchase with confidence knowing that Digi is always available to serve you with expert technical support and our industry leading warranty. For detailed information visit www.digi.com/support.

© 1996-2019 Digi International Inc. All rights reserved.
All trademarks are the property of their respective owners.

91002791
B6/319

DIGI INTERNATIONAL WORLDWIDE HQ
877-912-3444 / 952-912-3444 / www.digi.com

DIGI INTERNATIONAL GERMANY
+49-89-540-428-0

DIGI INTERNATIONAL JAPAN
+81-3-5428-0261 / www.digi-intl.co.jp

DIGI INTERNATIONAL SINGAPORE
+65-6213-5380

DIGI INTERNATIONAL CHINA
+86-21-50492199 / www.digi.com.cn

