

PRELIMINARY

# ConnectPort® X2

Ethernet Enabled Wireless M-Bus Gateway

Low-cost gateway operates on the European 868 MHz ISM band and is designed to concentrate the reading of water, gas and electric meters in AMR applications.



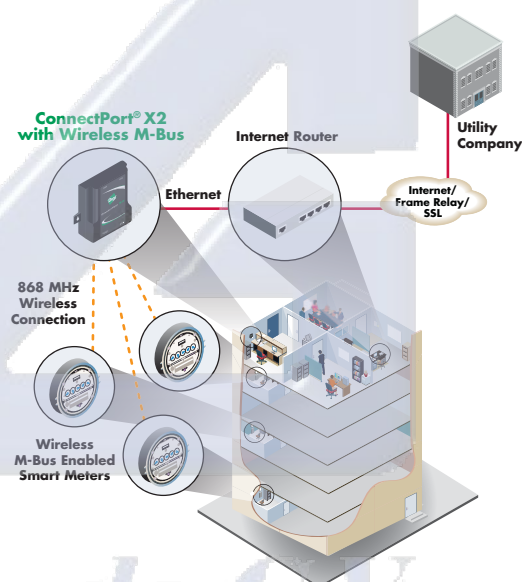
## Overview

The ConnectPort X2 with Wireless M-Bus provides utility operators a secure and reliable Internet gateway connection to concentrate the monitoring of Wireless M-Bus enabled utility meters, as well as introduce new customer engagement programs for energy conservation.

The gateway incorporates the Wireless M-Bus standard (EN-13757-4:2005) as well as the OMS (Open Metering Standard) specification, which defines the communications protocol between devices such as water, gas and electricity meters and the concentrators that make their information available to the utilities. The ConnectPort X2 with Wireless M-Bus is an excellent low-cost solution for energy service providers, as well as a platform to service smart grid initiatives in the future.

The Python-programmable gateway is also upgradable to use the iDigi® Device Cloud™, which enables easy firmware updates and is a secure, scalable resource for connecting utility customers with their energy usage data. With iDigi, utilities can develop new relationships with their customers by connecting with them via smartphones as well as energy reporting applications such as Google PowerMeter.

## Application Highlight



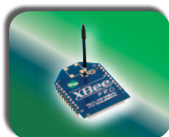
## Features/Benefits

- Low-cost gateway operates on European license-free 868 MHz ISM band
- Wireless M-Bus protocol complies with EN13757-4:2005 standards
- Supports OMS (Open Metering Standard) specification
- Supports AES128 data encryption for secure communications
- Facilitates enhanced energy service offerings
- Includes easy-to-use Python® development environment for local applications
- Upgradable to support iDigi Device Cloud

## Related Products



iDigi Solutions



Modules



Adapters



Dev Kits



Cellular Gateways



Sensors



Specifications		ConnectPort® X2 with Wireless M-Bus
General		
Management	HTTP/HTTPS web interface, Password access control, IP service port control	
Protocols	UDP/TCP, DHCP	
LEDs	Ethernet status, Power	
Security	AES-128 data encryption	
Dimensions (L x W x H)	2.81 in x 2.74 in x 1.30 in (7.14 cm x 6.96 cm x 3.30 cm)	
Weight	0.20 lb (0.09 kg)	
Performance		
RF Data Rate	2.4 Kbps / 16.384 Kbps / 66.6 Kbps (adjustable)	
Frequency	868 MHz	
Range/Line of Sight	Up to 30 m	
Development		
Python Version	2.4.3	
Memory (User-available memory varies by firmware and OS version)	8 MB RAM, 4 MB Flash	
Ethernet		
Ports	1 RJ-45 port	
Physical Layer	10/100Base-T	
Data Rate	10/100 Mbps (auto-sensing)	
Mode	Full or half duplex (auto-sensing)	
Power Requirements		
Power Input	5VDC power supply with barrel connector included	
Power Consumption	Idle: 1.2 W, Max: 3.4 W	
Surge Protection (with included power supply)	4 kV burst (EFT) per-4-4, 2 kV surge per EN61000-4	
Environmental		
Operating Temperature	0° C to 50° C (32° F to 122° F)	
Relative Humidity	5% to 90% (non-condensing)	
Ethernet Isolation	1500 VAC min per IEEE802.3/ANSI X3.263	
Regulatory Approvals		
Safety	EN60950	
Emissions/Immunity	CE and EN 300220, EN 301489, EN 60950, EN 50371, EN 13757-4:2005, AMB 8425-M	



Visit [www.digi.com](http://www.digi.com) for part numbers.

**DIGI SERVICE AND SUPPORT** - You can purchase with confidence knowing that Digi is here to support you with expert technical support and a strong five-year warranty. [www.digi.com/support](http://www.digi.com/support)

**Digi International  
Worldwide HQ**

877-912-3444  
952-912-3444

**Digi International  
France**

+33-1-55-61-98-98  
[www.digi.fr](http://www.digi.fr)

**Digi International  
Japan**

+81-3-5428-0261  
[www.digi-intl.co.jp](http://www.digi-intl.co.jp)

**Digi International  
India**

+91-80-4287-9887

**Digi International  
Singapore**

+65-6213-5380

**Digi International  
China**

+86-21-5150-6898  
[www.digi.cn](http://www.digi.cn)

BUY ONLINE • [www.digi.com](http://www.digi.com)



91001601  
82/1111

© 2010-2011 Digi International Inc.

All rights reserved. Digi, Digi International, the Digi logo, the Making Wireless M2M Easy logo, ConnectPort, iDigi and iDigi Device Cloud trademarks or registered trademarks of Digi International Inc. in the United States and other countries worldwide. All other trademarks are the property of their respective owners. All information provided is subject to change without notice.

[info@digi.com](mailto:info@digi.com)

